



# AMERICANA

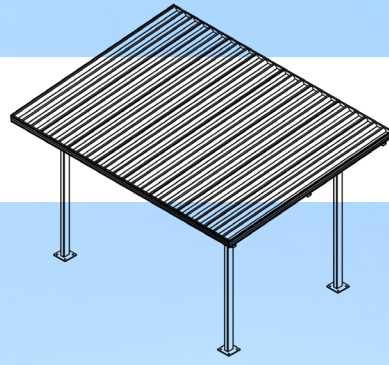
## OUTDOORS

Elements for Life *Outside*®



www.AMERICANA.com

# Monoslope Shelters





## Monoslope Shelters

Presenting the Americana Monoslope Shelter: Enjoy modern, stylish defense in any outdoor setting with its unique monoslope architecture. Our expert engineers have devised an elegant, effortlessly adaptable shelter that harmoniously complements an array of projects.

**Sizes:** Ranging from 6-50' wide and 12-84' long.

**Roof Pitch:** Standard 1/12.

**Optional Roof Pitch:** 1/12 - 5/12.

**Structure:** Four sided pre-fabricated, powder coated steel frame.

**Frame:** Tubular Steel.

**Standard Roof System:**

24" Aluminum "W" Panel with Extruded Aluminum Gutters.

**Optional Roof System:**

36" Galvalume "R" panel with Aluminum Edge Trim, or Optional Gutter.

18" Galvalume Standing Seam Panel with Extruded Aluminum Gutters, or Edge Trim with T&G Wood.

8" Aluminum Roll Formed Flat Panel with Extruded Aluminum Gutters.

Tongue & Groove Wood with Shingles.

**Add-On Accessories:** Steel railing.





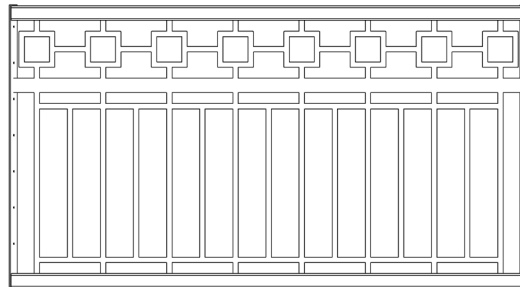
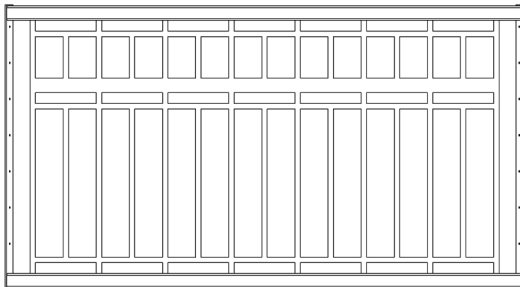
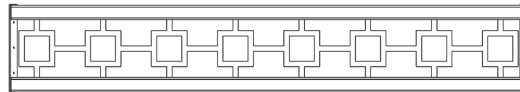
## Railing Options

Railings are a great way to add a unique touch to your structure and can be incorporated into most designs. There are several standard designs available, inspired by common architectural styles, and customized designs are available to suit your project's needs. Top Railings are 12" tall, Bottom Railings are 42" tall, made from 3/16" thick steel.

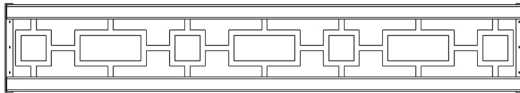
Line



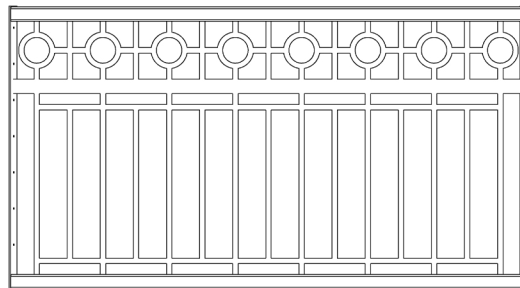
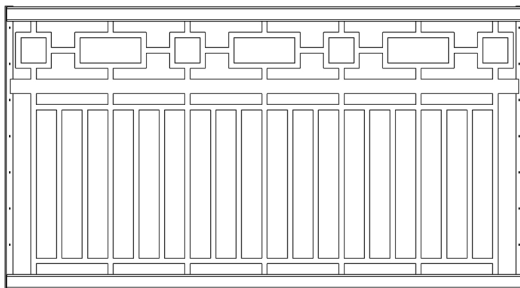
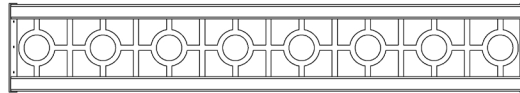
Square



Rectangle



Circle



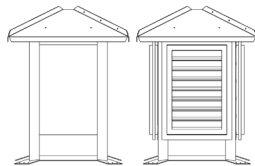


## Cupola, Clerestory, & Gable Options

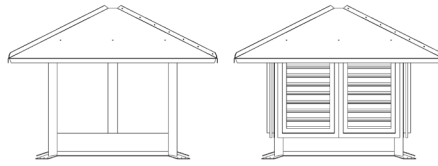
Our Cupolas, Clerestories, & Gables are designed to add natural light, ventilation, and a touch of elegance to your shelter. The Cupolas come standard with an Open design, or an optional Louvered panel. We also offer a fully customizable, laser cut panel option for the Cupolas, Clerestories, & Gables. Which is ideal for displaying logos, affiliations, or project sponsors.

### Cupola Options

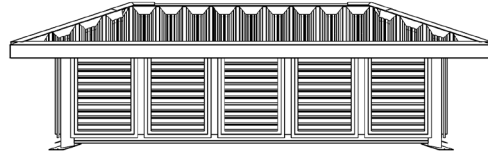
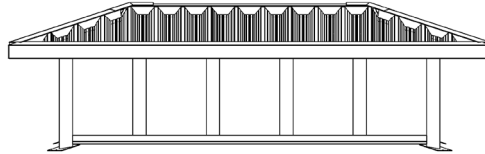
24 x 24"



48 x 48"

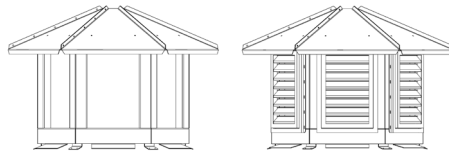


72 x 144"

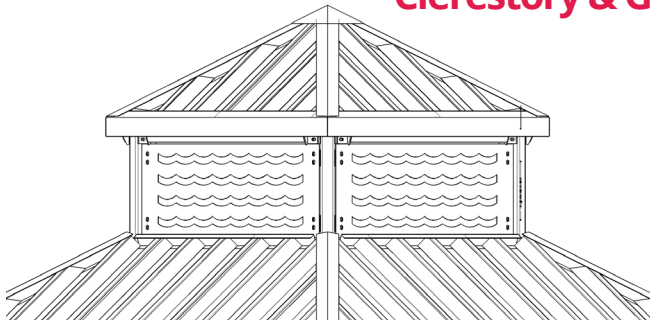


Hexagon (6 Sided) Cupola

Octagon (8 Sided) Cupola



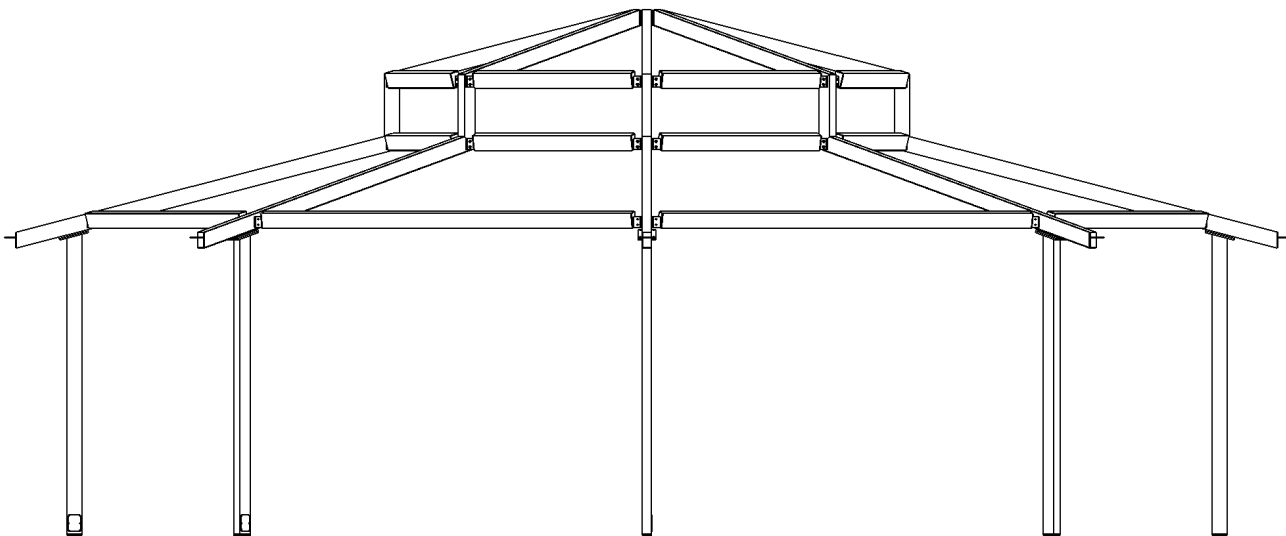
### Clerestory & Gable Examples



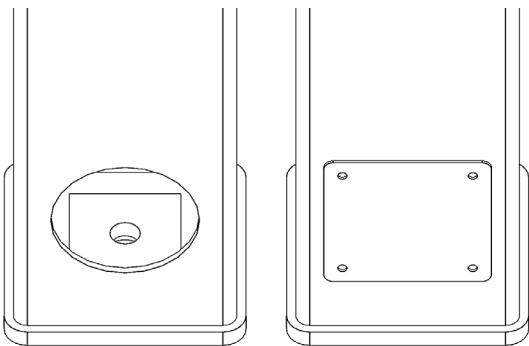


## Frame & Post Style

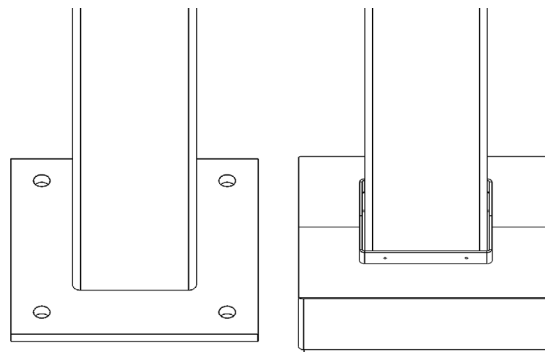
Americana Shelters feature American-made steel tubular frames, pre-drilled for easy bolt-together assembly, and detailed instructions that reduce installation costs. Fasteners are zinc-plated, galvanized, or stainless steel to prevent rust and stains.



## Standard Post Base Plate Connections



Internal Anchor Bolt with Cover Plate



External Anchor Bolts with Optional Cover



## Roof Panel Colors & Options

We take great pride in producing a majority of our roof panel options in-house, which gives us complete control over the quality and production schedule. By doing so, we are able to provide our customers with top-notch products while also passing on cost savings

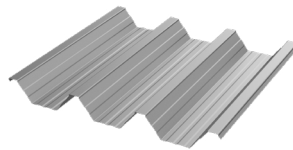
### 24" Aluminum Structural "W" Panel

#### Features:

Structural roof panel designed to limit the amount rafters & purlins per structure.

Best overall value when comparing cost & strength.

Gutters are included for water erosion management.



Coverage Width - 24"  
 Minimum Slope - 1/2:12  
 Thickness - .038" & .024" (560 Anodized Only)  
 Finish - **Stucco Embossed**  
 Coatings - **DuraCoat XT40 Ceranamel**  
 Rib Spacing - 8" on center  
 Rib Height - 2-1/2"

Compatible with all model shelters except for Pergola



### 36" Galvalume® 26 Gauge "R" Panel

#### Features:

Flush fit for a cleaner, sleeker appearance.

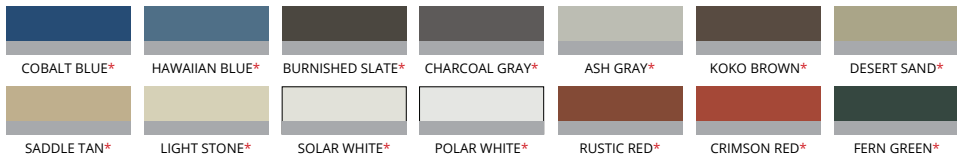
Designed to deter bird roosting.

Edge trim is included for a simple & flawless finish.



Coverage Width - 36"  
 Minimum Slope - 1/2:12  
 Gauge - 26  
 Finish - **Smooth**  
 Coatings - **Siliconized Polyester**  
 Rib Spacing - 12" on center  
 Rib Height - 1-1/4"

Compatible with all model shelters except for Meramec, Colonial & Pergola



\*Colors containing asterisks have a wash coat bottom side\*

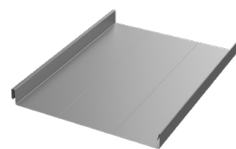
### 18" Galvalume® 24 Gauge Standing Seam Panel

#### Features:

Flush fit for a cleaner, sleeker appearance.

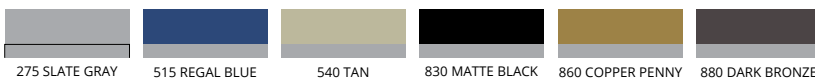
Designed to deter bird roosting.

Gutters are included for water erosion management. Edge trim is standard with tongue and groove wood substructures applications.



Coverage Width - 18"  
 Minimum Slope - 1/2:12  
 Gauge - 24  
 Finish - **Smooth**  
 Coatings - **Siliconized Polyester**  
 Rib Spacing - N/A  
 Rib Height - 1-3/4"

Compatible with all model shelters except for Meramec, Colonial, & Pergola



Each color has a wash coat on the underside, paired with an inked date stamp for manufacturer warranty verification.



## Roof Panel Colors & Options

We take great pride in producing a majority of our roof panel options in-house, which gives us complete control over the quality and production schedule. By doing so, we are able to provide our customers with top-notch products while also passing on cost savings

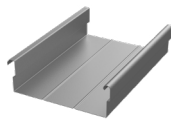
### 8" Aluminum Structural Flat Panel

#### Features:

Flush fit for a cleaner, sleeker appearance.

—  
Designed to deter bird roosting.

—  
Gutters are included for water erosion management.



Coverage Width - 8"  
Minimum Slope - 1/2:12  
Thickness - .024", .032", & .040"  
Finish - Smooth Matte Finish  
Coatings - DuraCoat XT40 Ceranamel  
Rib Spacing - N/A  
Rib Height - 2-5/8"

Compatible with all model shelters except for Meramec & Pergola



275 SLATE GRAY



510 BLACK



520 BRONZE



550 BONE WHITE



560 ANODIZED

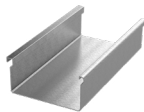
### 6" Aluminum Extruded Flat Panel

#### Features:

Flush fit for a cleaner, sleeker appearance.

—  
Designed to deter bird roosting.

—  
Gutters are included for water erosion management.



Coverage Width - 6"  
Minimum Slope - 1/2:12  
Thickness - .065"  
Finish - Smooth Gloss Finish  
Coatings - Super Durable Polyester  
Rib Spacing - N/A  
Rib Height - 2-7/8"

Compatible only with Walkways & Entry Covers

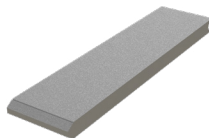
  
Powder coat finish available in all frame colors. Full RAL color palette available at additional cost.

### 3" Thick Insulated Aluminum Panel White stucco finish with foam core

#### Features:

Insulated panels for noise and temperature control.

—  
Flush fit for a cleaner, sleeker appearance.



Compatible with all model shelters except for Cherokee, Pergola, Walkways & Entry Covers

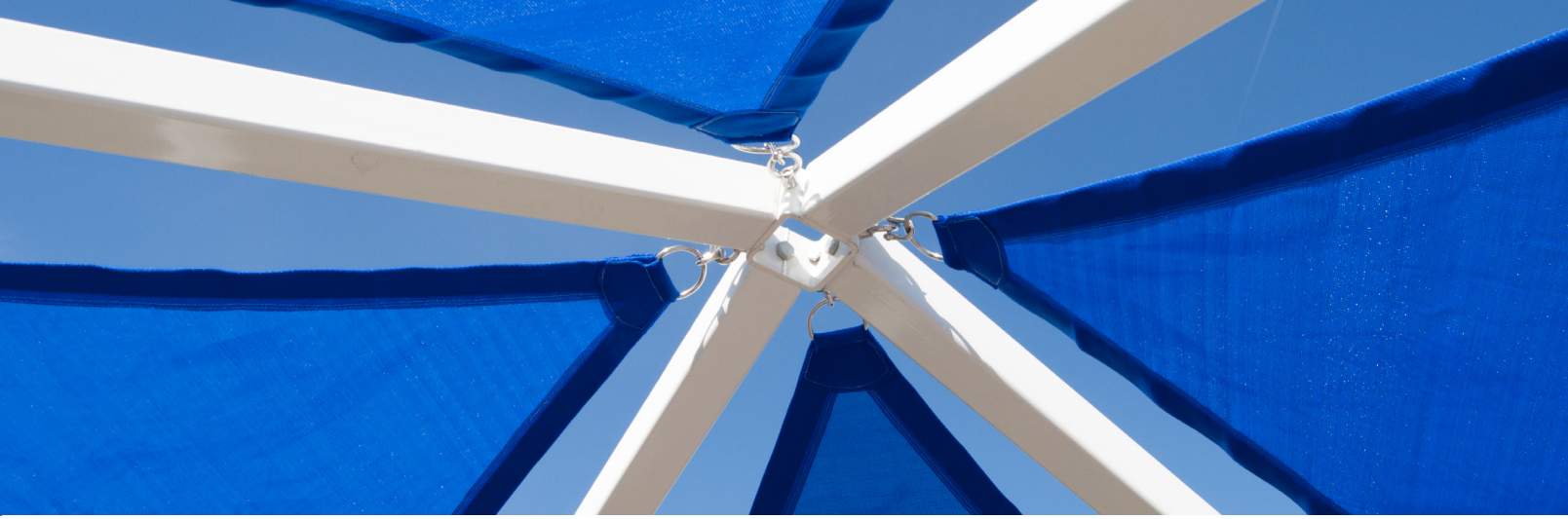
### Tongue and Groove Wood



1) Southern Yellow Pine  
2) Western Cedar

Utilized as sub roofing for shelters using the 18" standing seam panels or shingles.





## Frame & Fabric Color Options

Our Americana Industrial Coatings division enables us to powdercoat all of our products in-house, setting us apart from our competitors. This grants us complete authority over pricing, quality, and production times, allowing us to transfer these benefits to our customers.




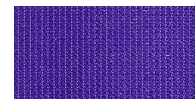
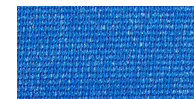

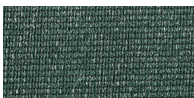
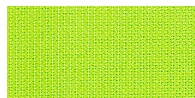

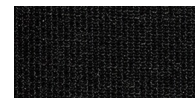
### Super Durable Frame Color Options

					
205 ORANGE RAL 2004	215 YELLOW	220 RAVEN (TEXTURED)	235 NAVY BLUE RAL 5003	240 ROYAL BLUE RAL 5005	242 SKY BLUE RAL 5015
					
245 CAST BRONZE RAL 8019	265 HUNTER GREEN RAL 6005	270 QUARTZ GRAY RAL 7039	275 SLATE GRAY	285 RED RAL 3001	290 SILVER
					
815 ASH GRAY	820 CHARCOAL GRAY	840 COLONIAL RED	865 LIGHT GREEN		

### Super Durable & Anti Graffiti Frame Color Options

					
510 BLACK	515 REGAL BLUE	520 BRONZE	525 BROWN	530 CLAY	535 IVORY
					
540 TAN	545 TERRA COTTA	550 WHITE	555 DARK GREEN		

### Fabric Shelter Color Options

					
YELLOW	ORANGE	CRIMSON	GRAPE	OCEAN BLUE	SAND
					
FOREST GREEN	LIME GREEN	GRAPHITE	JET BLACK		

## Sales & Installation Support

Design and engineering support and documentation to satisfy local requirements: Heavy Snow, Seismic, High Winds, Hail, Custom Designs & Sizes.

Average standard lead times are 6-8 weeks from receipt of approved order. Lead times may vary on design criteria.

Installation and sales support available M-F (8am-5pm) central standard time.

Since Americana is a custom manufacturer, non-standard items are routinely fabricated with no delays. Minimal extra charges may be incurred for engineering.

## Warranty Terms

### Lifetime Limited Warranty

Lifetime Limited Warranty on aluminum against material failure and corrosion.

### 25 Year Limited Warranty

25 Year Limited Warranty on steel against material failure and defects.

### 10 Year Limited Warranty

10 Year Limited Warranty on Sunbrella, Sheerweave, & Solamesh Fabrics

10 Year Limited Warranty on all powder coat finishes (200, 500 and 800 series). With the use of Americana's 500 Series Anti-graffiti powder coat finish is guaranteed to allow removal of graffiti with virtually no change to the finish.

### 5 Year Limited Warranty

5 Year Limited Warranty on Soltis 86 fabrics.

### 1 Year Warranty

1 Year warranty against defects in materials and workmanship.

### Period of Coverage:

The warranty period begins on the date of the original shipment.

### What Americana Will Do To Correct Problems:

If defects or damage of the kind mentioned above should occur within the warranty period, Americana will replace the defective parts only; FOB its plant at Salem, Illinois, upon receiving the written and documented claim of the purchaser.

### Warranty Exclusions:

Because of the normal aging and weathering of materials, it may not be possible to perfectly match the colors of original parts and replacement parts. Americana will not provide or pay for the installation of such replacement parts. Americana shall not be responsible for weather-related failures, damages due to faulty installation, misuse or abuse of the product, or for consequential damages, including personal injuries or property damages. There are no warranties, express, or implied, which extend beyond the description on the face hereof.

### How To File A Warranty Claim:

If you believe that you have a claim under this warranty, submit a copy of your original receipt or other reasonable evidence of the date of purchase, the identity of the product, and photos and a description of the allegedly defective product to the address below. Please also include your name, address, and phone number so that a customer service representative can respond to your submission. The ultimate determination of the existence and extent of any claimed defect under this warranty shall be made by Americana in its sole discretion.

Submit Claims To:

Americana Outdoors, Inc, Warranty Claim  
P.O. Box 1290  
Salem, IL 62881



PO Box 1290, Salem IL 62881  
1-800-851-0865, Fax: 1-618-548-2890  
Sales@Americana.com  
www.Americana.com

