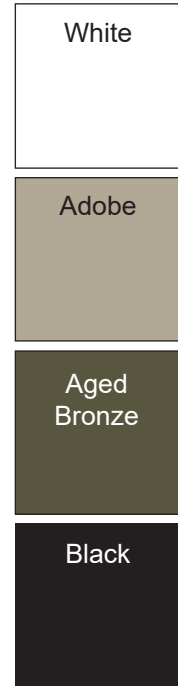




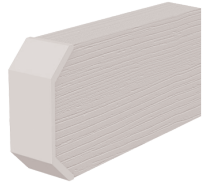
Pergolas - Single Header Attached & Freestanding



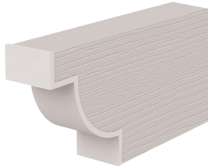
Single Header Pergola Features:

- Roll-formed Aluminum with an embossed wood grain finish provides the look of wood without the hassle. Will not rot, warp or need repainting.
- Single header and posts have adjustable placement, allowing you to locate where needed. Some restrictions will apply in heavy load bearing areas.
- Cut to length headers and rafters that have routed ends with caps factory installed. 3 options available.
- Lattice tubes at 1-1/2" square with standard 3" gap providing 50% shade. Gap can be customized to provide more or less shade.
- Standard posts are an extruded aluminum 3" square. Attached units come with mounting brackets.
- Freestanding units require posts to be embedded in concrete or use optional heavy duty mounting brackets. Optional decorative post surrounds are available. See order chart for details.

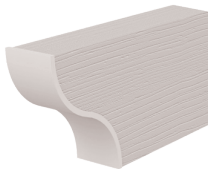




Mitered End



Deluxe End



Scallop End



Double Header Pergola Features:

- Roll-formed Aluminum with an embossed wood grain finish provides the look of wood without the hassle. Will not rot, warp or need repainting.
- Double header and posts have adjustable placement, allowing you to locate where needed. Some restrictions will apply in heavy load bearing areas.
- Cut to length headers and rafters that have routed ends with caps factory installed. 3 options available.
- Lattice tubes at 1-1/2" square with standard 3" gap providing 50% shade. Gap can be customized to provide more or less shade.
- Standard posts are an extruded aluminum 3" square. Attached units come with mounting brackets.
- Freestanding units require posts to be embedded in concrete or use optional heavy duty mounting brackets. Optional decorative post surrounds are available. See order chart for details.



Window Arbors



Window Arbor Features:

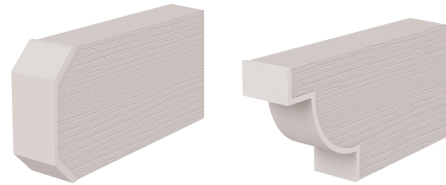
Woodgrain embossed aluminum components are sent cut to length, ready to install.

Components have ends routed and end caps installed.

Unit has a two 2" x 6.5" rafters and 1-1/2" lattice.

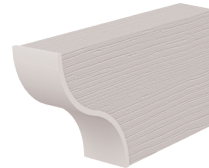
Aluminum wall braces mount under rafters. Standard sizes are 42" projection with 78" and 90" widths.

Adjustable brace placement:
78" width allows maximum 62" between braces.
90" width allows maximum 74" between braces.

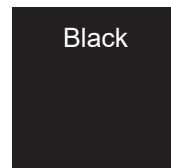
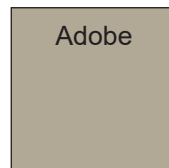
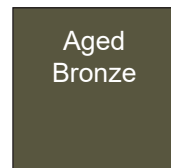
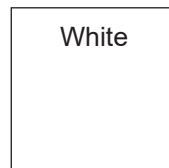


Mitered End

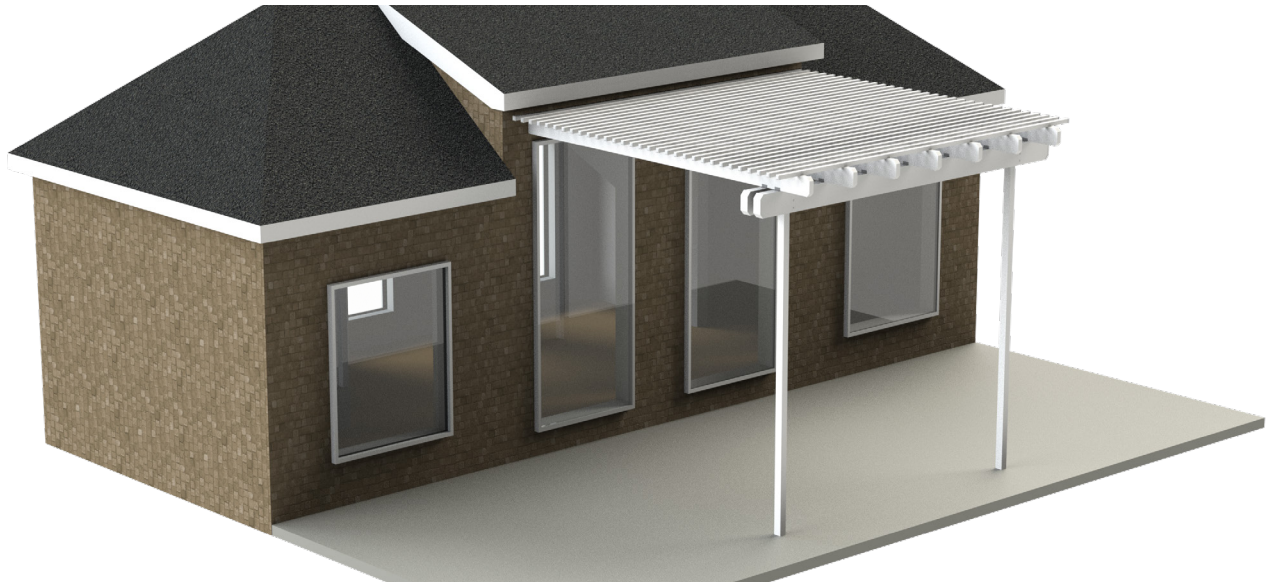
Deluxe End



Scallop End

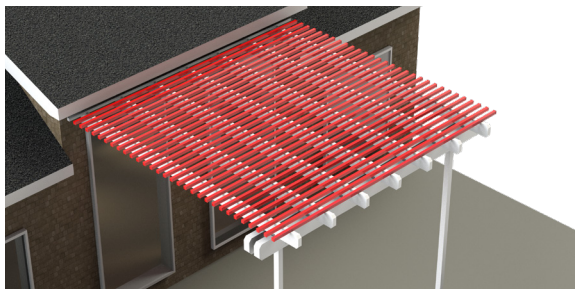


Colors may not print accurate, please call 800-851-0865 to order color samples.



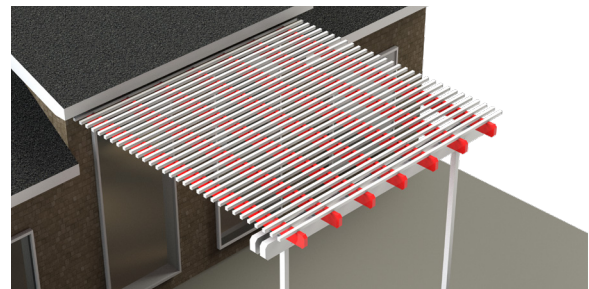
Pergola Terminology

Lattice Tubes



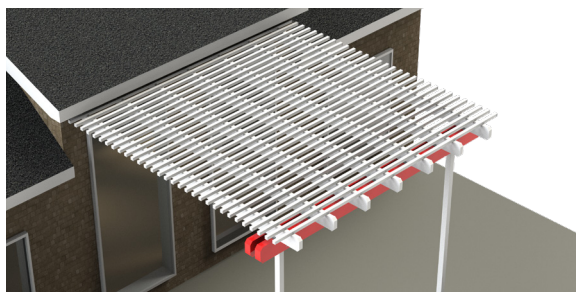
Small 1.5" x 1.5" Aluminum tubes that span the width of the unit and create the main source of shade.

Rafter Beams



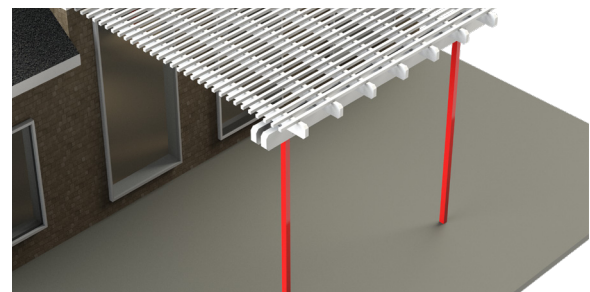
Large 2 x 6.5" Aluminum beams that span the projection of the unit and provide support for the lattice tubes.

Header Beams

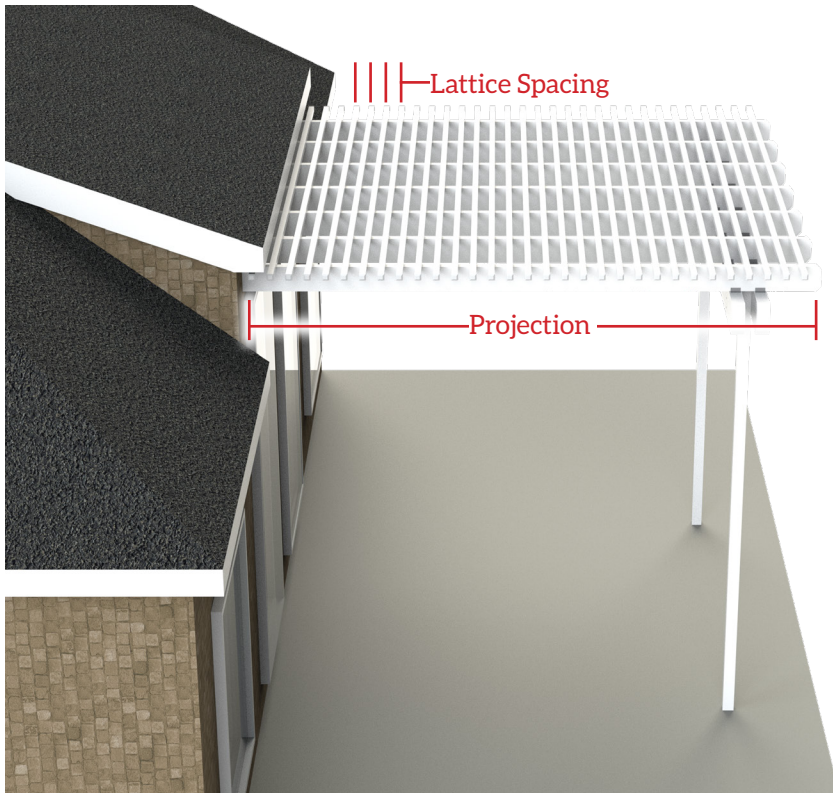
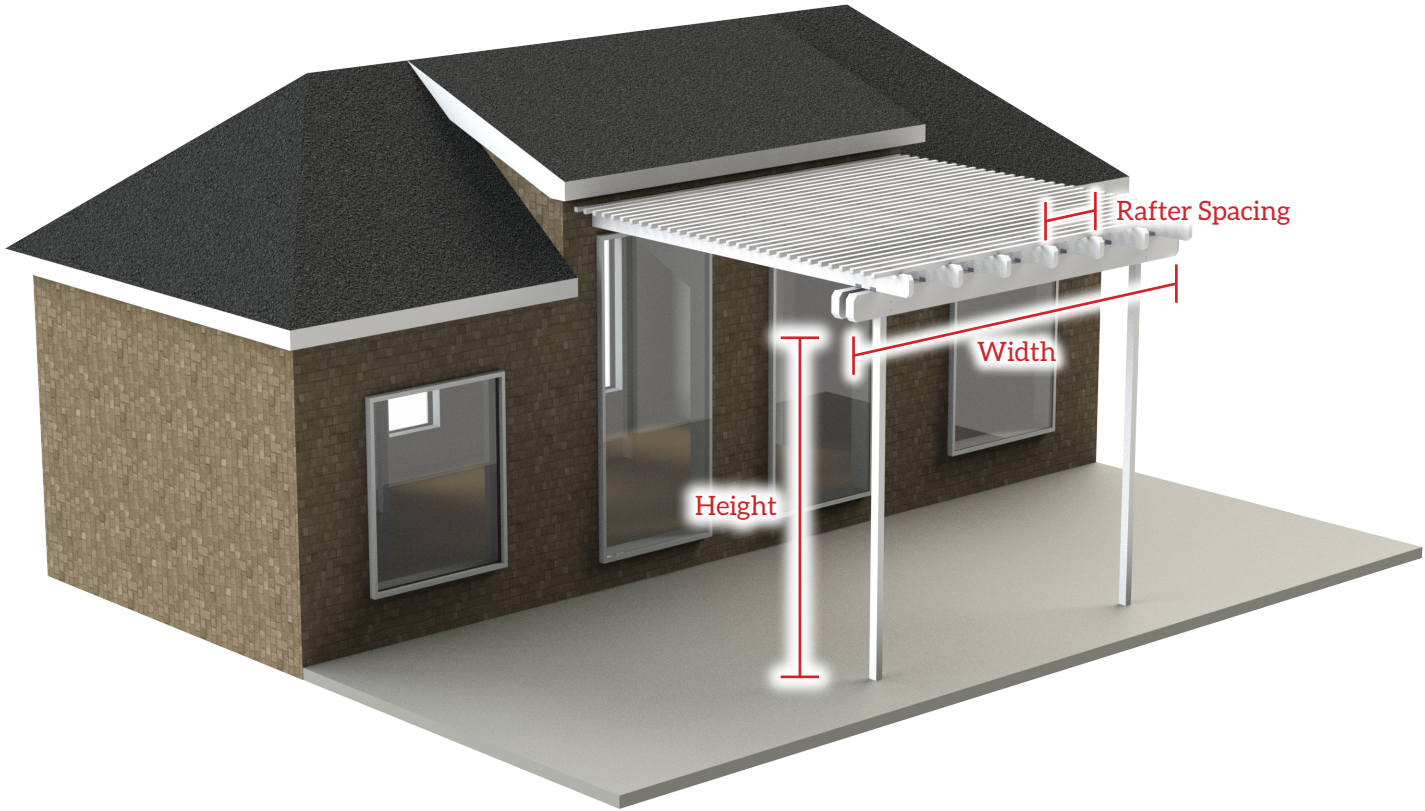


Large 3 x 8" Aluminum beam(s) that span the width of the unit, attach to the posts, and provide support for the rafter beams and lattice tubes.

Posts



Heavy-Duty 3 x 3" Aluminum tubes that span the height of the unit, attach to the base and header(s), and provide support for the roof assembly.



Measurement Terminology

Height: Distance from the bottom of the structure to the bottom of header beam(s).

Width: Tip to tip measurement of header beams and lattice tubes.

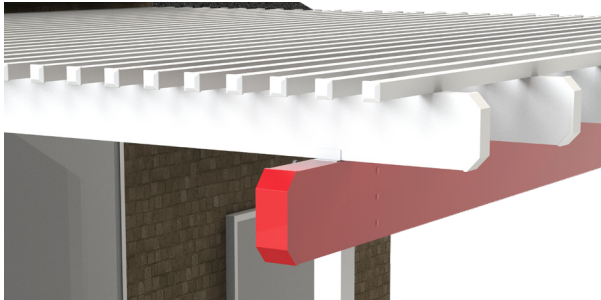
Projection: Tip to tip measurement of rafters from point of attachment to end of rafter.

Rafter Spacing: Distance between rafters. (Standard 22" Gap)

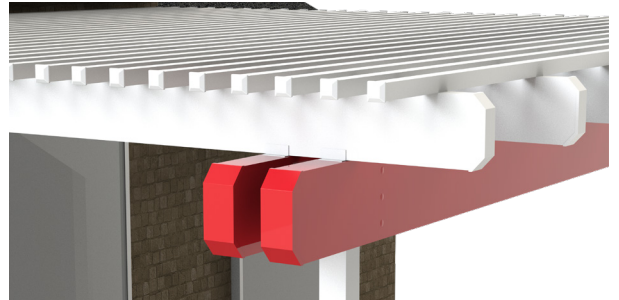
Lattice Spacing: Distance between lattice tubes. (Standard 3" Gap)

Beam Options

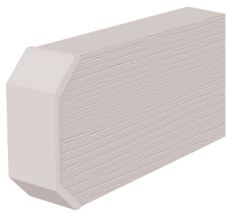
Single Header Beam



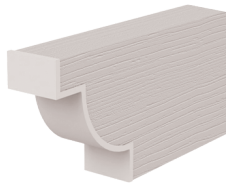
Double Header Beam



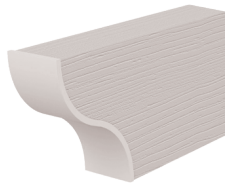
Header/Rafter End Cut Options



Mitered End



Deluxe End

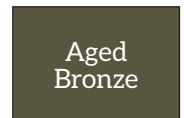


Scallop End

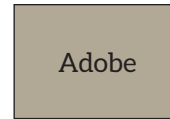
Color Options



White



Aged
Bronze



Adobe



Black

Colors may not print accurate, please call 800-851-0865 to order color samples.

Post Options

Standard 3" Square Aluminum Post

2x6" Wood Look Side Plates

Aluminum Fluted Round Column

Aluminum Fluted Square Column

Aluminum Smooth Square Column

Fiberglass Round Column



Pergola Style

Attached Freestanding Direct Bury (Standard) Surface Mount

Beam Option

Single Header Beam Double Header Beams

Dimensions

Projection _____

Width _____

Color Option

White Aged Bronze

Adobe Black

Lattice Spacing

Create more, or less shade with the lattice tubes

Standard 3" Gap 1-1/2" Gap No Lattice Custom Gap _____

Rafter Spacing

Create more, or less shade with the rafter spacing

Standard 22" Gap Custom Gap _____

Snow & Wind Load Requirements

Load requirements vary from state to state, please consult with local authority if unsure of needs.

10lbs Snow 20lbs Snow 30lbs Snow

Standard Wind Rated 90 mph, higher wind loads available.

Post Choice

Standard 3" Square Aluminum Post Standard Post with 2x6" Wood Look Side Plates

Aluminum Fluted Round Column (6", 8" or 10") Aluminum Fluted Square Column (6", 8" or 10")

Aluminum Smooth Square Column (6", 8" or 10") Fiberglass Round Column (6", 8", 10", or 12")
Any Color Available, Must Be Painted In Field

Warranty

What the Warranty Covers:

Americana Outdoors (Americana) warrants its products that have been installed in accordance with the installation guidelines, under normal usage conditions, and with proper maintenance as follows:

Ten (10) year warranty against peeling, cracking, blistering, or crazing of the surface finish of aluminum components.

One (1) year warranty against defects in materials and workmanship.

Period of Coverage:

The warranty period begins on the date of original shipment.

What Americana Will Do To Correct Problems:

If defects or damage of the kind mentioned above should occur within the warranty period, Americana will replace the defective parts only; FOB its plant at Salem, Illinois, upon receiving the written and documented claim of purchaser.

What the Warranty Excludes:

Because of normal aging and weathering of materials, it may not be possible to perfectly match the colors of original parts and replacement parts. Americana will not provide or pay for the installation of such replacement parts. Americana shall not be responsible for weather related failures, damages due to faulty installation, misuse or abuse of the product, or for consequential damages, including personal injuries or property damages. There are no warranties, express or implied, which extend beyond the description on the face hereof.

How Do You Get Service:

If you believe that you have a claim under this warranty, submit a copy of your original receipt or other reasonable evidence of the date of purchase, the identity of the product, and photos and a description of the allegedly defective product to the address below. Please also include your name, address, and phone number so that a customer service representative can respond to your submission. Ultimate determination of the existence and extent of any claimed defect under this warranty shall be made by Americana in its sole discretion.

Submit Claims To:

Americana Outdoors Inc, Warranty Claim, P.O. Box 1290, Salem, IL, 62881



PO Box 1290, Salem IL 62881
1-800-851-0865, Fax: 1-618-548-2890
Sales@Americana.com
www.Americana.com



2022 PERGOLA CATALOG