



Add a splash of color to your home

Every awning is custom made to your specifications. With 140+ colors to choose from, you can make your home stand out from the crowd. Customize with alternate valance color and scallop design.



Size

Height - how far down the window an awning should come: This depends on where the window is located. On the east or west side of the house, the awning needs a drop that covers 65%-75% of the window. Because of the higher angle of the sun, an awning on the south side needs to cover only 45%-60% of the window to produce the same amount of shade.

Projection - Recommend 1/2 the height of the window, just make sure the awning does not project into the path of foot traffic unless it is at least 6' 8" from the ground.

Many Styles

- American, Canadian, Parisian and Marquee awnings use a heavy 1/2" x 2" anodized aluminum frame. Assembled
 - Classic Rainbo and Rainbo awnings have 3/4" round metal frame. Assembly required.
 - Venetian awnings are retractable with your choice of a hand crank or remote control and motor. Assembled
- Choose whichever best fits your taste or the requirements of your particular installation. Each style will be a durable, attractive awning and is available in custom-made sizes to fit every window in your home.

Many Styles

Americana awnings let in light, yet shut out heat and keep homes cooler by providing cool shade for hot sunny windows.

Environmentally friendly with energy savings

Awnings rate high as shading devices since they block direct sunlight before it enters the windows. They are attached above the window and extend outward and down. A properly installed awning can reduce heat gain in your home up to 65% on southern windows and as much as 77% on eastern and western windows.



Tips to Enhance the Long Life and Good Looks of Fabric Awnings

- Keep your awnings clean by rinsing every month or so with a garden hose. Do this on a hot sunny day to speed drying.
- Sunbrella® fabric: Every year or so, clean with a mild soap, but rinse thoroughly and immediately. For those stains that are beyond our normal care and cleaning instructions, such as bird droppings, roof run-off, acid rain, pollution, rust, tree sap, insect stains, etc., we suggest the products listed below under fabric care.
- Textilene® fabric: Common dirt: take care of stain promptly with warm water and strong detergent. Oil or grease: Use rubbing alcohol. Mildew: Use strong liquid detergent and warm water with bleach. See products listed below under fabric care.
- Clean underside of your awnings by brushing with a clean household broom.
- Keep shrubs and vines away from the awnings. They may contain acid, which can harm the fabric.
- Do not fold or roll awnings in extremely cold temperatures.
- Do not get insect spray on the fabric.
- Do not allow water to stand on the awning.
- Do not force awnings when raising or lowering them.
- Do not use your charcoal grill underneath an awning.
- Do not store awnings when they are damp.
- Remove leaves, twigs, etc. quickly to prevent stains.

Sunbrella® Fabric Care Products

1st step:

303 Fabric Cleaner. Designed to safely remove whatever Mother Nature and air pollution can drop onto awnings. Rinse awning with water. Use 1/2 cup or more cleaner in 1 gallon of warm water. Spray or brush on. Allow to penetrate. Brush with a soft brush, rinse thoroughly. For heavier soils, increase brushing and soak time. Rinse THOROUGHLY to remove soil and cleaning agent. Allow to air dry. It's now time to retreat with a fabric guard.

2nd step:

303 Fabric Guard. Apply every 1-3 years to renew the water repellent finish of your fabric. Reapply after every cleaning. Fabric should be thoroughly cleaned and dry. Spray until evenly wet overlapping spray area. Wait till dry to reuse awning. Apply to prevent soil and moisture from penetrating the fabric weave and make subsequent cleaning faster and easier.



Features:

- Max unit size: 8' wide, 8' height.
- Aluminum frame, white.
- Solid aluminum weight bar.
- Powder coated mounting brackets.
Attach to wall or ceiling
3.35" tall x 3.5" deep
- Pull cord operation.
- Extruded aluminum roller tube 2".
- Guide system to stabilize fabric during breezy conditions is included.

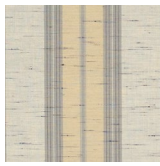
Fabric Options:

- Sunbrella® tight weave fabric - 10 year limited warranty (Water repellent) *See pages 13-15
- Textilene® open weave fabric - 10 year limited warranty (Not water repellent)
*See color options below

Textilene® open weave fabric
10 year limited warranty
Filters up to 94% of UV rays, yet allows lighththrough. Not water repellent.







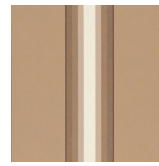
4777



4789



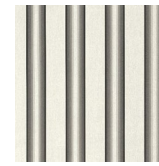
4790



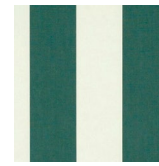
4796



4798



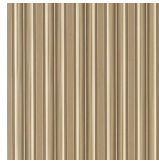
4799



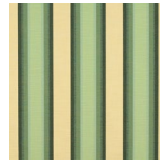
4806



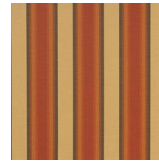
4813



4817



4856



4857



4858



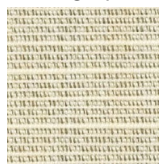
4859



4860



4861



4862



4868



4876



4878



4884



4885



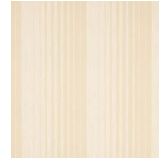
4887



4888



4889



4890



4892



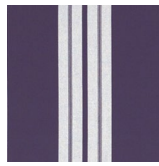
4893



4894



4895



4902



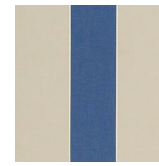
4907



4909



4916



4921



4923



4932



4939



4945



4946



4949



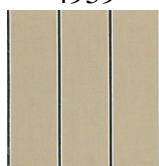
4954



4955



4959



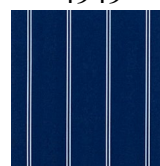
4961



4969



4985



4987



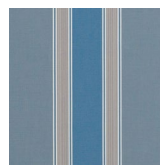
4988



4989



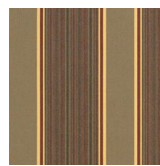
4991



4992



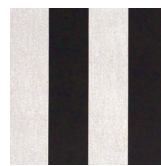
4993



4994

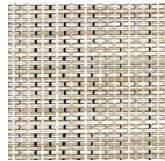


5702

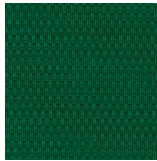


5704

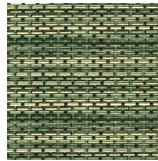
**Textilene® open weave fabric
5 year limited warranty
Filters up to 94% of UV rays, yet allows light through. Not water repellent.**



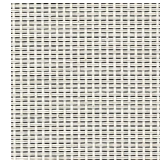
Birch Tweed



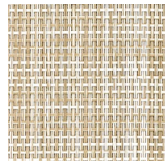
Green



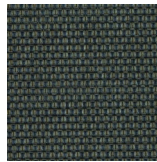
Autumn Fern



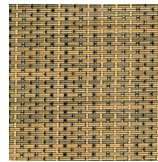
Linen



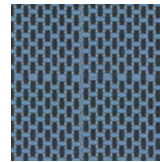
Linen Tweed



Black



Sand Tweed



Ocean Blue

Warranty

What the Warranty Covers:

Americana Outdoors Inc warrants its products that have been installed in accordance with the installation guidelines, under normal usage conditions, and with proper maintenance as follows: Ten (10) year warranty against peeling, cracking, blistering, or crazing of the surface finish of aluminum components. One (1) year warranty against defects in materials and workmanship. Sunbrella® tight weave fabric, & Sheerweave fabric - 10 year limited warranty. Textilene® open weave fabric, & Soltis 86 - 5 year limited warranty.

Period of Coverage:

The warranty period begins on the date of original shipment.

What Americana Will Do To Correct Problems:

If defects or damage of the kind mentioned above should occur within the warranty period, Americana will replace the defective parts only; FOB its plant at Salem, Illinois, upon receiving the written and documented claim of purchaser.

What the Warranty Excludes:

Because of normal aging and weathering of materials, it may not be possible to perfectly match the colors of original parts and replacement parts. Americana will not provide or pay for the installation of such replacement parts. Americana shall not be responsible for weather related failures, damages due to faulty installation, misuse or abuse of the product, or for consequential damages, including personal injuries or property damages. There are no warranties, express or implied, which extend beyond the description on the face hereof.

How Do You Get Service:

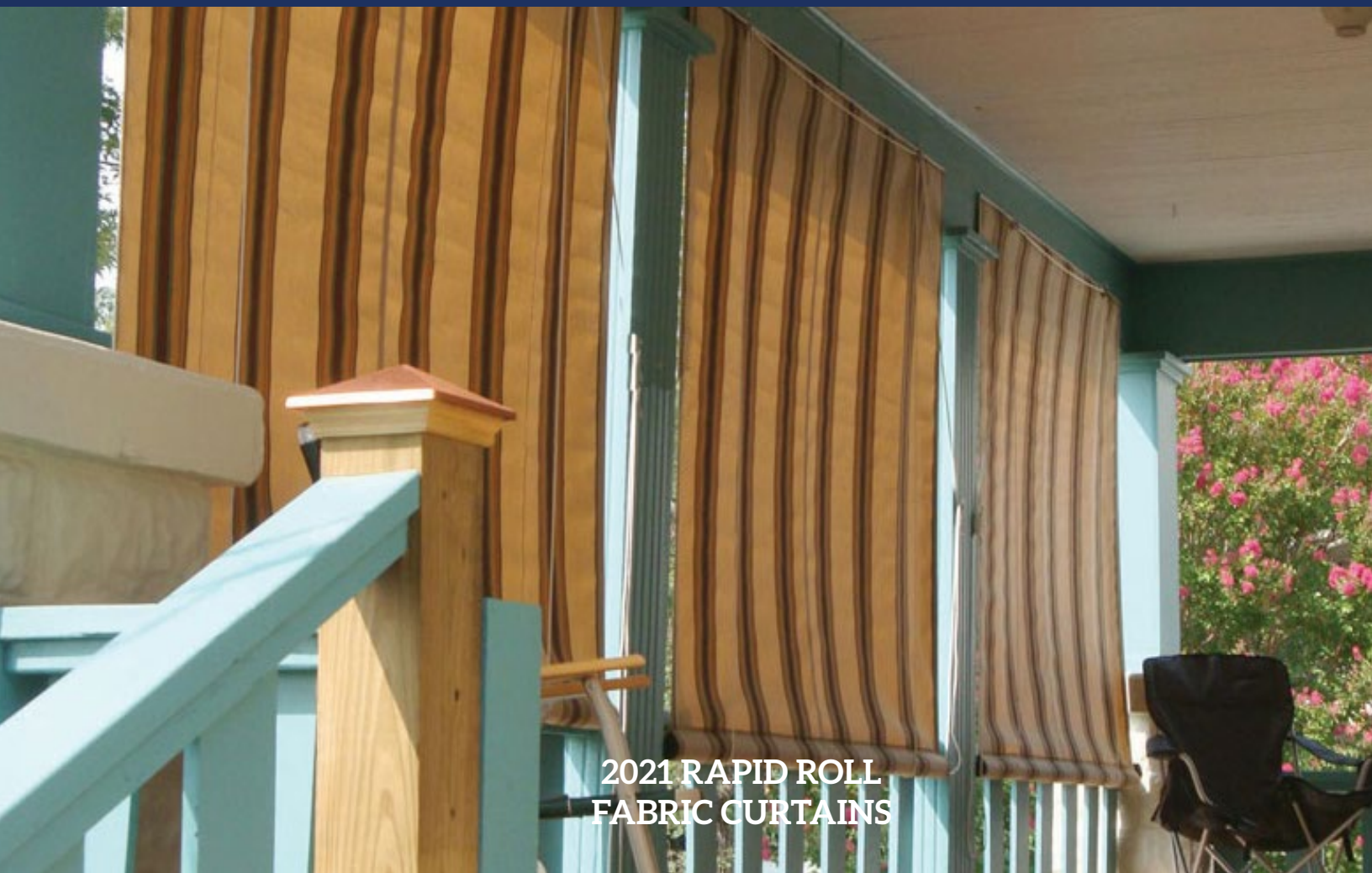
If you believe that you have a claim under this warranty, submit a copy of your original receipt or other reasonable evidence of the date of purchase, the identity of the product, and photos and a description of the allegedly defective product to the address below. Please also include your name, address, and phone number so that a customer service representative can respond to your submission. Ultimate determination of the existence and extent of any claimed defect under this warranty shall be made by Americana in its sole discretion.

Submit Claims To:

Americana Outdoors, Inc Warranty Claim, P.O. Box 1290, Salem, IL, 62881



PO Box 1290,
2 Industrial Drive, Salem IL 62881
1-800-851-0865
Sales@Americana.com



2021 RAPID ROLL
FABRIC CURTAINS