



Adding a porch or patio cover? Points to consider:

1. Roof panel choices

Americana offers several roof panels for our covers. Each model lists style included.

- V shaped panels are the most economical with a corrugated ceiling.
- Flat shape panel for a smooth under ceiling
- Insulated panel has a polystyrene core and stucco embossed aluminum skin.

2. Post placement.

- Sierra model:

4 in. tall beam mounts to pre-punched roof panels, creating a 6 in. overhang.

- All other models:

Posts mount under beam. Place beam 6 in. to 24 in. from front upon installation.

3. Wall mounting area

Unit must slope down from the attached wall.

If using 8' tall post on a 10' projection cover: Mount unit at 101 inches.

$96 \text{ in. (8')} + 5 \text{ in. (1/2 in. per foot of projection)} = 101 \text{ in. mounting height}$

Make sure wall is free of obstructions at this dimension.

Post may be shortened on job site, changing mounting height if needed.

4. Posts can be surface mounted or bury 2' in concrete. Order longer post if placing in concrete.

5. Post type will be indicated in the kit information with options listed.

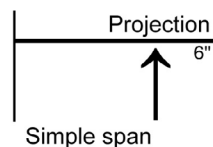
6. When choosing model keep weather and environmental conditions in mind for your area.

Reference each model for wind speed and live snow load capabilities.

Engineering Data on Simple Span

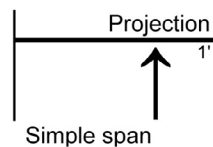
Attached Units = Distance from wall mount to beam/post location

Freestand Units = Distance between beams/posts

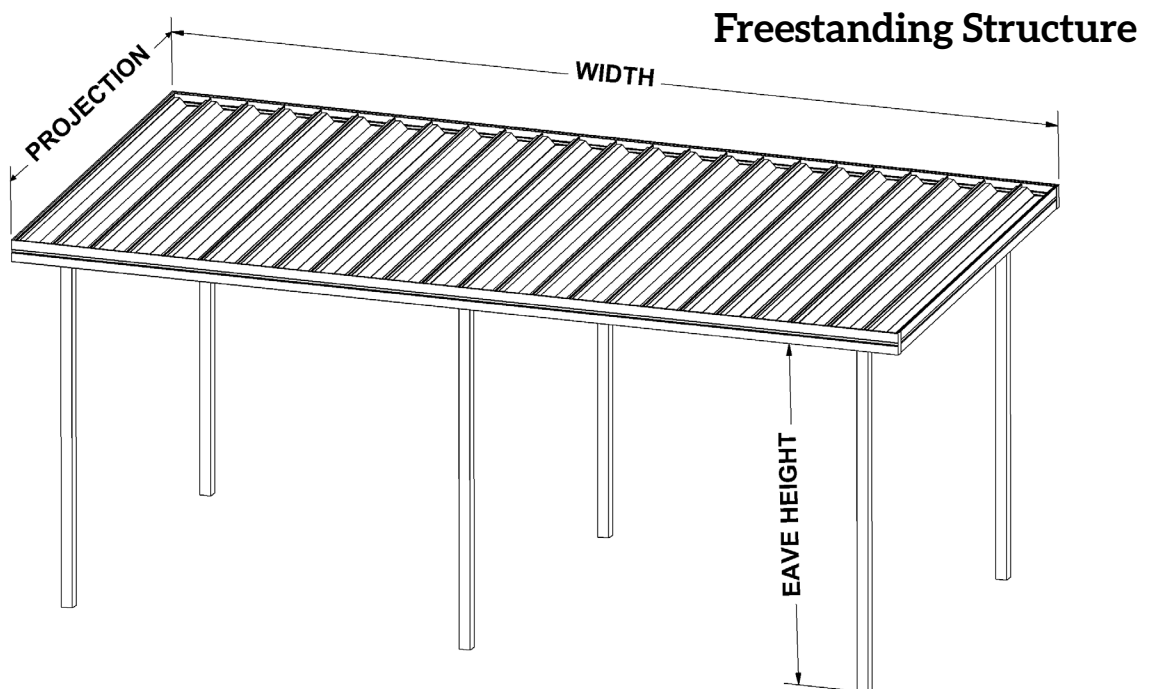
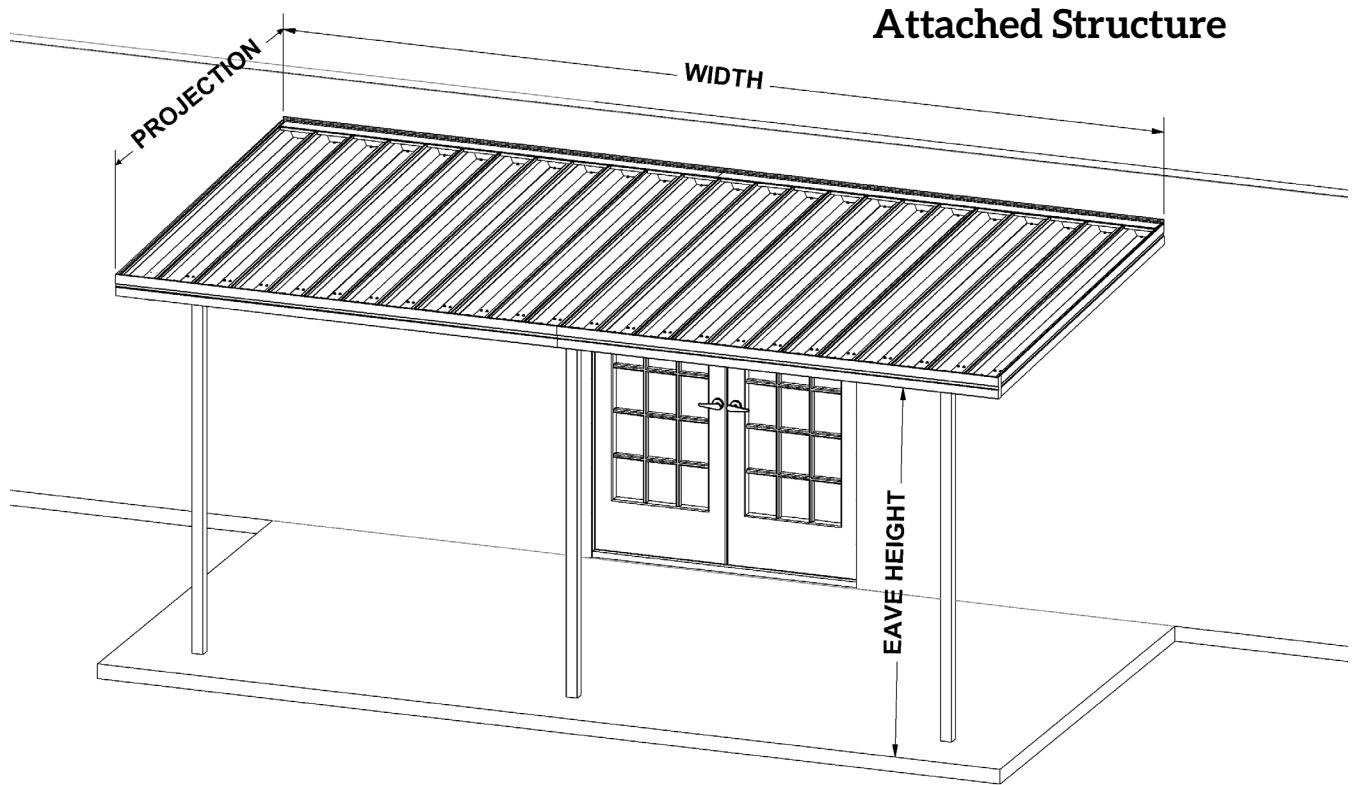


Examples

Sierra style has a standard 6" set back of beam.
 $8' 6'' \text{ projection} = 8' \text{ beam location} = 8' \text{ simple span}$
 Light & Moderate Load
 54# per sq foot & 110 mph winds



Teton style has adjustable beam placement
 $11' \text{ projection with } 1' \text{ beam setback} = 10' \text{ simple span}$
 Light & Moderate Load
 24# per sq foot & 90 mph winds





Features:

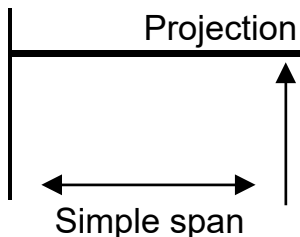
- Engineered for all different climates and environments.
- Components are pre-punched, making installation fast and easy
- Choice of 3 in. square post or decor column, extruded aluminum
- Roll-formed aluminum gutter and side trim
- Roll-formed aluminum panels 10 in. width
- Two piece wall channel to adjust roof slope
- Scuppers are sent to drain water from front gutter

Engineering Data for Open Structures

Sierra Southern Climates					
	7'	8'	10'	12'	14'
Roof Panel Thickness	.019	.019	.019	.019	.025
Live Snow Load	75 lbs	50 lbs	35 lbs	25 lbs	20 lbs
Wind Speed	110 mph	110 mph	90 mph	80 mph	Not Rated

Sierra Midwestern Climates					
	7'	8'	10'	12'	14'
Roof Panel Thickness	.019	.019	.025	.025	.032
Live Snow Load	75 lbs	50 lbs	45 lbs	30 lbs	30 lbs
Wind Speed	110 mph	110 mph	110 mph	85 mph	85 mph

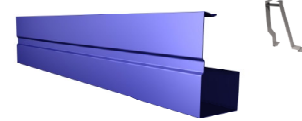
Sierra Northern Climates					
	7'	8'	10'	12'	14'
Roof Panel Thickness	.025	.025	.032	.032	.040
Live Snow Load	90 lbs	65 lbs	55 lbs	40 lbs	35 lbs
Wind Speed	120 mph	120 mph	120 mph	100 mph	90 mph



We can engineer what you need. Call us with your code requirements. Loads can be increased by moving beam placement or adding additional beams.

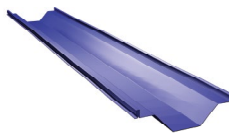
Components

6" tall, with a 3" x 3" gutter, Rollformed aluminum, stucco embossed
Snap onto a clip installed in roof panel



WHITE	TAN	CLAY	BROWN
IVORY	GRAY	BLACK	DARK GREEN

10" V Panel - 3 Load Options
Aluminum, roll formed
Slide or snap together
Pre-punched for installation



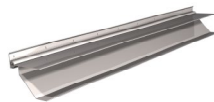
WHITE	IVORY
-------	-------

Post Options: Aluminum in 8' or 10' length
1) Decor 9" wide column
2) Post 3" square with brackets

WHITE
IVORY
CLAY
BROWN
BLACK



Wall Hanger
Extruded aluminum 2 piece system allows
virtually any roof pitch and protects against
damage from ground heaving.



Pre-punched for ease of installation

WHITE	IVORY
-------	-------

___ Projection from wall to front of cover
in 1" increments. Locate beam location.
Standard unit is sent with roof panels
punched for beam 6" back from front

___ Width along wall in 10" increments

___ Choose Roof Panel Thickness (Gauge)

Wall Mounting: Check wall for obstructions

Posts will mount to:

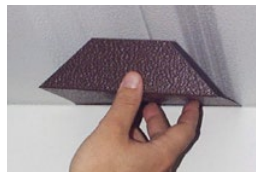
- ___ Concrete slab
- ___ Wood Deck
- ___ Buried in ground...use 10' post/column

Support Beam
Rollformed "C" 4" tall x 2" wide
Galvalume metal
Standard beam/post location 6" from front

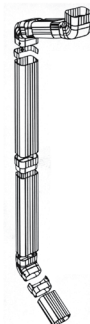


Optional Components

Bird Plugs: use between beam and roof panel
Choice of : Aluminum or Styrofoam



Downspout Kit
2x3" tube, all elbows, fittings, straps



Warranty

What the Warranty Covers:

Americana Outdoors Inc warrants its products that have been installed in accordance with the installation guidelines, under normal usage conditions, and with proper maintenance as follows: Ten (10) year warranty against peeling, cracking, blistering, or crazing of the surface finish of aluminum components. One (1) year warranty against defects in materials and workmanship. Sunbrella® tight weave fabric, & Sheerweave fabric - 10 year limited warranty. Textilene® open weave fabric, & Soltis 86 - 5 year limited warranty.

Period of Coverage:

The warranty period begins on the date of original shipment.

What Americana Will Do To Correct Problems:

If defects or damage of the kind mentioned above should occur within the warranty period, Americana will replace the defective parts only; FOB its plant at Salem, Illinois, upon receiving the written and documented claim of purchaser.

What the Warranty Excludes:

Because of normal aging and weathering of materials, it may not be possible to perfectly match the colors of original parts and replacement parts. Americana will not provide or pay for the installation of such replacement parts. Americana shall not be responsible for weather related failures, damages due to faulty installation, misuse or abuse of the product, or for consequential damages, including personal injuries or property damages. There are no warranties, express or implied, which extend beyond the description on the face hereof.

How Do You Get Service:

If you believe that you have a claim under this warranty, submit a copy of your original receipt or other reasonable evidence of the date of purchase, the identity of the product, and photos and a description of the allegedly defective product to the address below. Please also include your name, address, and phone number so that a customer service representative can respond to your submission. Ultimate determination of the existence and extent of any claimed defect under this warranty shall be made by Americana in its sole discretion.

Submit Claims To:

Americana Outdoors, Inc Warranty Claim, P.O. Box 1290, Salem, IL, 62881



PO Box 1290,
2 Industrial Drive, Salem IL 62881
1-800-851-0865
Sales@Americana.com



2021 'SIERRA PATIO COVER &
CARPORT BROCHURE