



Adding a porch or patio cover? Points to consider:

1. Roof panel choices

Americana offers several roof panels for our covers. Each model lists style included.

- V shaped panels are the most economical with a corrugated ceiling.
- Flat shape panel for a smooth under ceiling
- Insulated panel has a polystyrene core and stucco embossed aluminum skin.

2. Post placement.

- Sierra model:

4 in. tall beam mounts to pre-punched roof panels, creating a 6 in. overhang.

- All other models:

Posts mount under beam. Place beam 6 in. to 24 in. from front upon installation.

3. Wall mounting area

Unit must slope down from the attached wall.

If using 8' tall post on a 10' projection cover: Mount unit at 101 inches.

$96 \text{ in. (8')} + 5 \text{ in. (1/2 in. per foot of projection)} = 101 \text{ in. mounting height}$

Make sure wall is free of obstructions at this dimension.

Post may be shortened on job site, changing mounting height if needed.

4. Posts can be surface mounted or bury 2' in concrete. Order longer post if placing in concrete.

5. Post type will be indicated in the kit information with options listed.

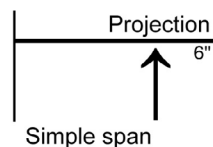
6. When choosing model keep weather and environmental conditions in mind for your area.

Reference each model for wind speed and live snow load capabilities.

Engineering Data on Simple Span

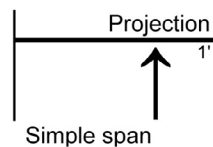
Attached Units = Distance from wall mount to beam/post location

Freestand Units = Distance between beams/posts

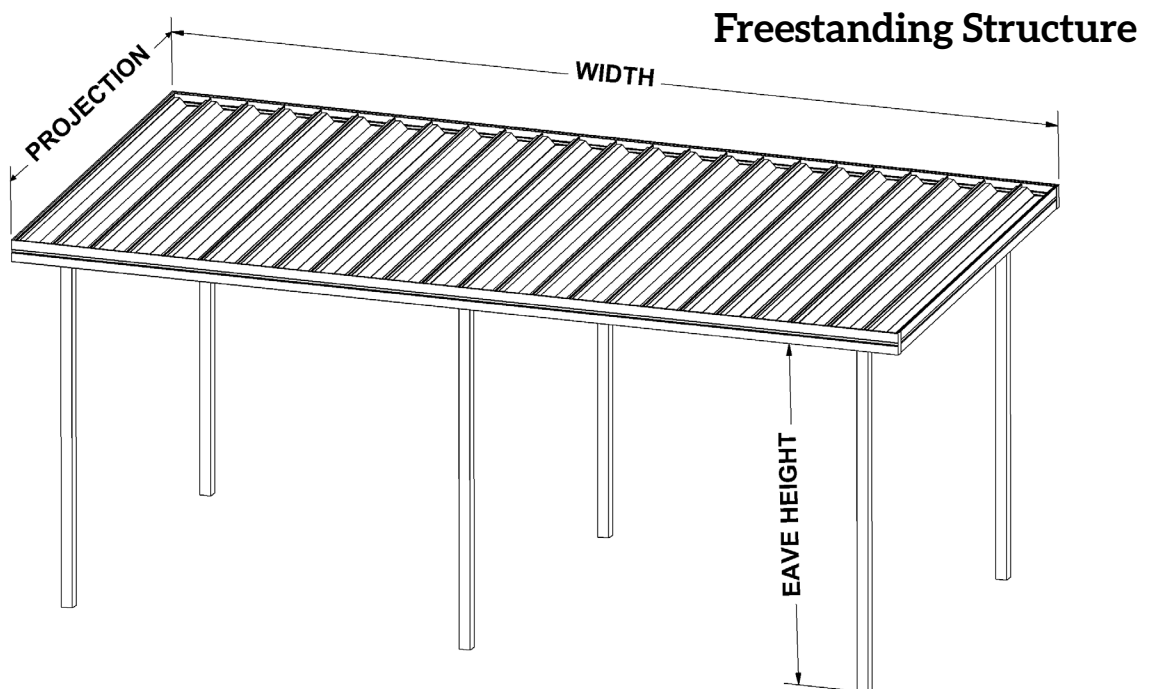
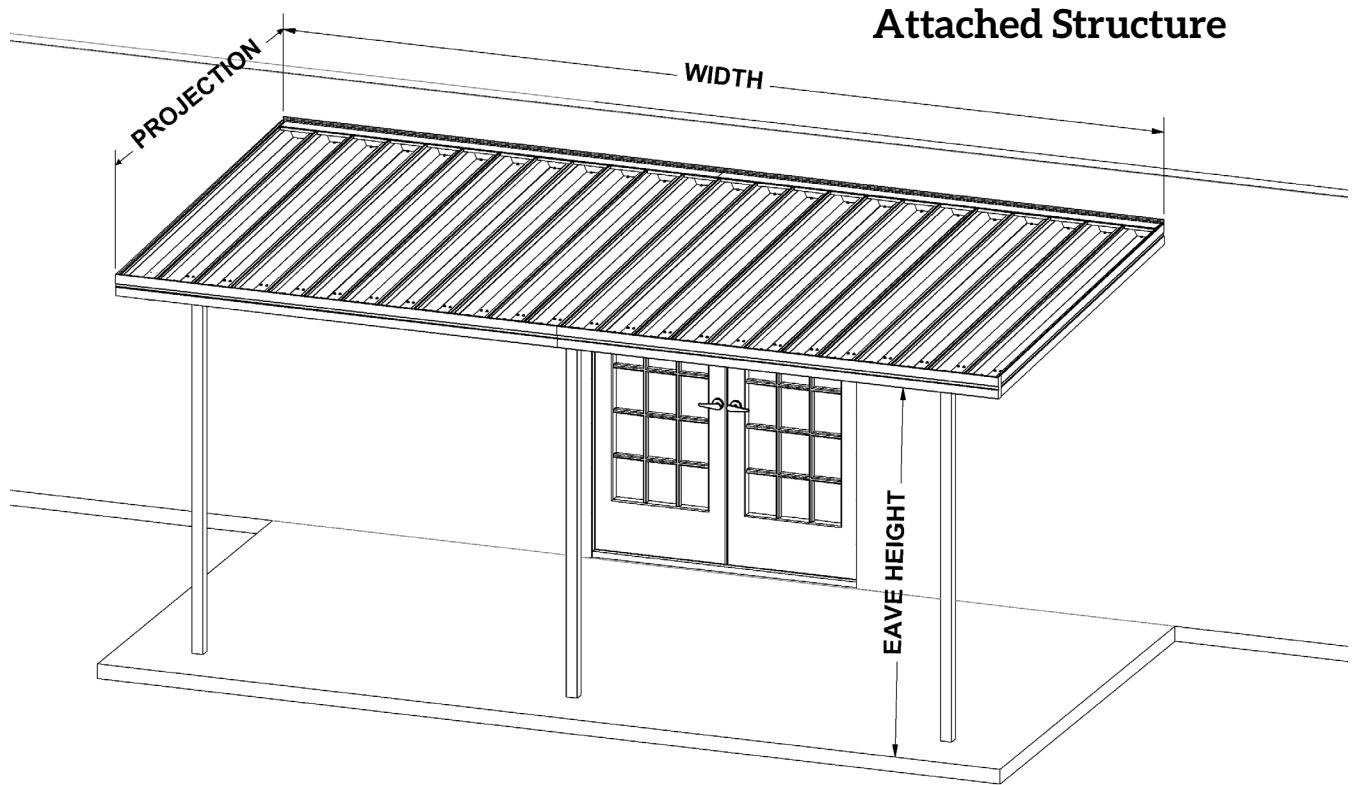


Examples

Sierra style has a standard 6" set back of beam.
 $8' 6'' \text{ projection} = 8' \text{ beam location} = 8' \text{ simple span}$
 Light & Moderate Load
 54# per sq foot & 110 mph winds



Teton style has adjustable beam placement
 $11' \text{ projection with } 1' \text{ beam setback} = 10' \text{ simple span}$
 Light & Moderate Load
 24# per sq foot & 90 mph winds





Features:

- Yukon patio covers lower the outside temperature by up to 10 degrees with R12 rated insulation.
- Engineered for all climates, the Yukon provides superior protection from winter storms
- Built to last a lifetime with minimal care
- Snap together 3 in. insulated panels provide our strongest support
- 2 piece extruded aluminum wall channel to adjust roof slope
- Adjustable post placement, set beam 6- 24in. from front, maximum 12' from house.
- Quiet during a rain and reduces temperatures up to 15% on hot days.
- Eliminates gap between gutter, beam and roof panel

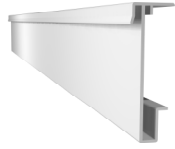
Engineering Data for Open Structures

3" Thick Yukon Patio Cover - Clear Span					
	8'	10'	12'	14'	16'
Aluminum Skin Thickness	.024	.024	.024	.024	.024
Live Snow Load	50 lbs	40 lbs	30 lbs	20 lbs	20 lbs
Wind Speed	140 mph	140 mph	120 mph	120 mph	110 mph

We can engineer what you need. Call us with your code requirements.
Loads can be increased by moving beam placement or adding additional beams.

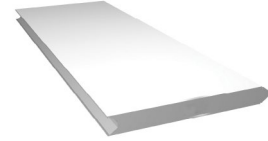
Components

3" tall trim
Extruded aluminum
Screw on to roof panel



WHITE

3" Insulated Panel
Aluminum Snap Lock
Superior Strength



Post 3" square with brackets
extruded aluminum 8' or 10'



WHITE

IVORY

CLAY

BROWN

BLACK

Support Beam
Extruded, 3" square Aluminum



WHITE

Beam allow posts to be set back up to
24" from front of cover.

Optional Components

Panel with Fan Beam

This allows you to hang a ceiling light or fan. When installing, run electrical wire through the beam and secure light or fan to beam. Beam is installed into the panel at the factory. Place this panel where desired.



Fan, Bracket, & Wiring
Sold Separatly

___ Projection from wall to front of cover
in 1" increments.
Note: Locate beam location

___ Width along wall in 24" increments

___ Add Panel with Fan Beam

Wall Mounting: Check wall for obstructions

Posts will mount to:

___ Concrete slab ___ Wood Deck

___ Buried in ground...use 10' post/column

Warranty

What the Warranty Covers:

Americana Outdoors Inc warrants its products that have been installed in accordance with the installation guidelines, under normal usage conditions, and with proper maintenance as follows: Ten (10) year warranty against peeling, cracking, blistering, or crazing of the surface finish of aluminum components. One (1) year warranty against defects in materials and workmanship. Sunbrella® tight weave fabric, & Sheerweave fabric - 10 year limited warranty. Textilene® open weave fabric, & Soltis 86 - 5 year limited warranty.

Period of Coverage:

The warranty period begins on the date of original shipment.

What Americana Will Do To Correct Problems:

If defects or damage of the kind mentioned above should occur within the warranty period, Americana will replace the defective parts only; FOB its plant at Salem, Illinois, upon receiving the written and documented claim of purchaser.

What the Warranty Excludes:

Because of normal aging and weathering of materials, it may not be possible to perfectly match the colors of original parts and replacement parts. Americana will not provide or pay for the installation of such replacement parts. Americana shall not be responsible for weather related failures, damages due to faulty installation, misuse or abuse of the product, or for consequential damages, including personal injuries or property damages. There are no warranties, express or implied, which extend beyond the description on the face hereof.

How Do You Get Service:

If you believe that you have a claim under this warranty, submit a copy of your original receipt or other reasonable evidence of the date of purchase, the identity of the product, and photos and a description of the allegedly defective product to the address below. Please also include your name, address, and phone number so that a customer service representative can respond to your submission. Ultimate determination of the existence and extent of any claimed defect under this warranty shall be made by Americana in its sole discretion.

Submit Claims To:

Americana Outdoors, Inc Warranty Claim, P.O. Box 1290, Salem, IL, 62881



PO Box 1290,
2 Industrial Drive, Salem IL 62881
1-800-851-0865
Sales@Americana.com



**2021 YUKON PATIO COVER &
CARPORT BROCHURE**