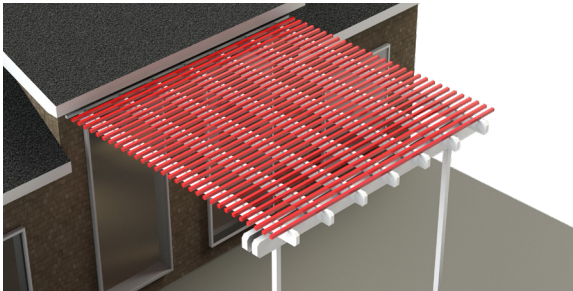


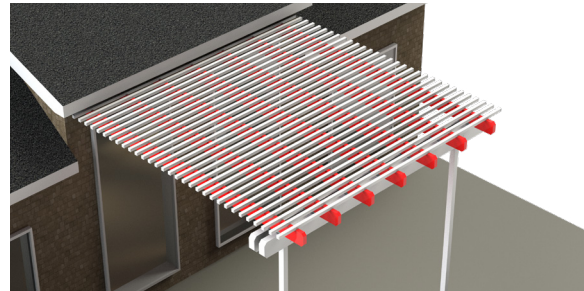
Pergola Terminology

Lattice Tubes



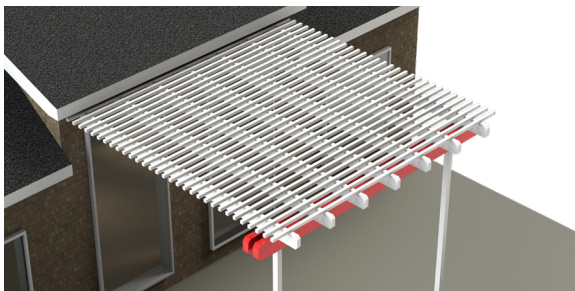
Small 1.5" x 1.5" Aluminum tubes that span the width of the unit and create the main source of shade.

Rafter Beams



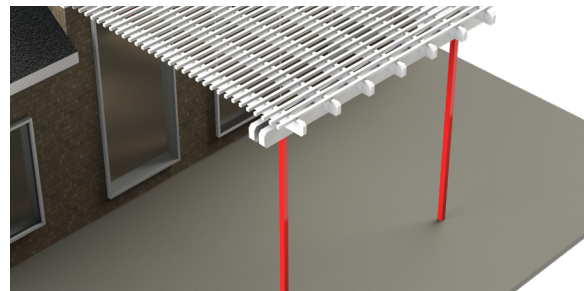
Large 2 x 6.5" Aluminum beams that span the projection of the unit and provide support for the lattice tubes.

Header Beams

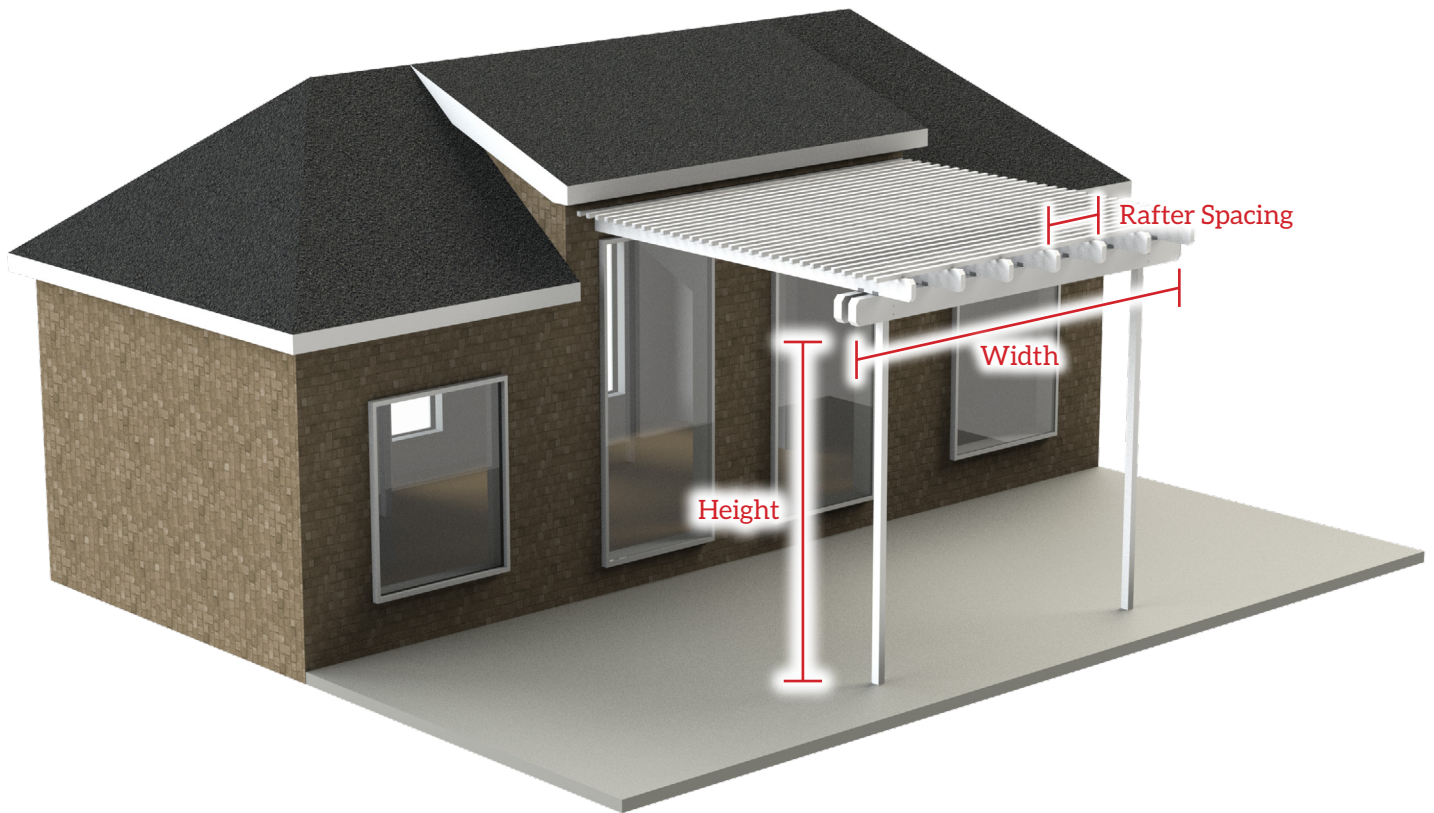


Large 3 x 8" Aluminum beam(s) that span the width of the unit, attach to the posts, and provide support for the rafter beams and lattice tubes.

Posts



Heavy-Duty 3 x 3" Aluminum tubes that span the height of the unit, attach to the base and header(s), and provide support for the roof assembly.



Measurement Terminology

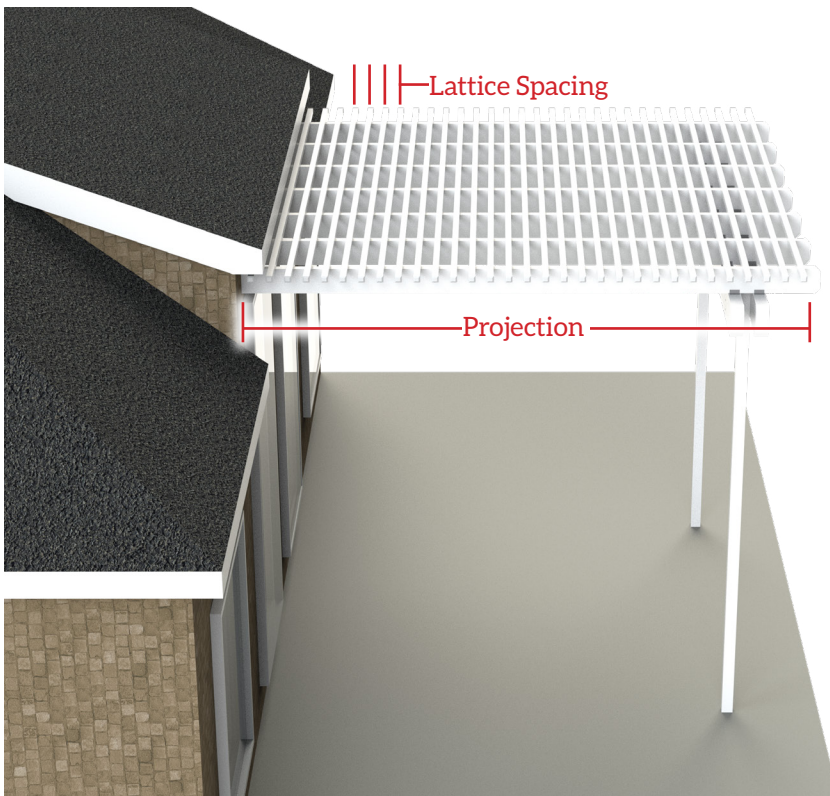
Height: Distance from the bottom of the structure to the bottom of header beam(s).

Width: Tip to tip measurement of header beams and lattice tubes.

Projection: Tip to tip measurement of rafters from point of attachment to end of rafter.

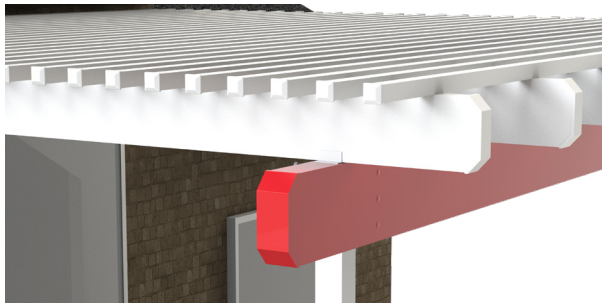
Rafter Spacing: Distance between rafters. (Standard 22" Gap)

Lattice Spacing: Distance between lattice tubes. (Standard 3" Gap)

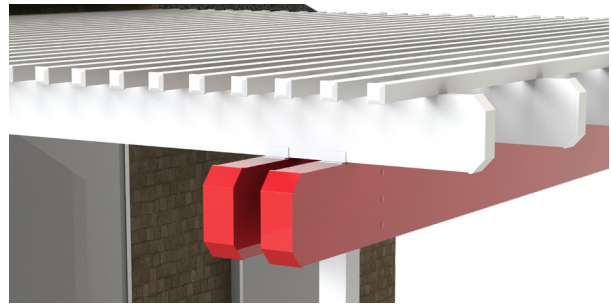


Beam Options

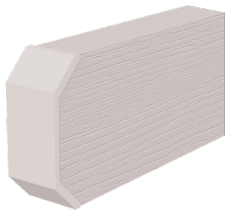
Single Header Beam



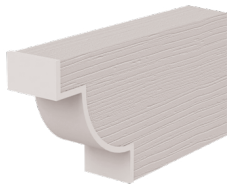
Double Header Beam



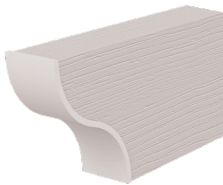
Header/Rafter End Cut Options



Mitered End

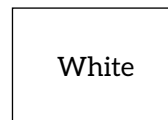


Deluxe End

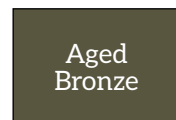


Scalloped End

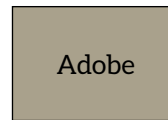
Color Options



White



Aged
Bronze



Adobe



Black

Colors may not print accurate, please call 800-851-0865 to order color samples.

Post Options

Standard 3" Square Aluminum Post

2x6" Wood Look Side Plates

Aluminum Fluted Round Column

Aluminum Fluted Square Column

Aluminum Smooth Square Column

Fiberglass Round Column



Pergola Style

Attached Freestanding

Post Attachment

Direct Bury (Standard) Surface Mount

Beam Option

Single Header Beam Double Header Beams

Heavy-Duty Surface Mount
(for use in high wind load areas)

Dimensions

Projection _____

Width _____

Header/Rafter End Cut

Mitered (Standard)
 Deluxe
 Scallop

Color Option

White Aged Bronze
 Adobe Black

Lattice Spacing

Create more, or less shade with the lattice tubes

Standard 3" Gap 1-1/2" Gap No Lattice Custom Gap _____

Rafter Spacing

Create more, or less shade with the rafter spacing

Standard 22" Gap Custom Gap _____

Snow & Wind Load Requirements

Load requirements vary from state to state, please consult with local authority if unsure of needs.

10lbs Snow 20lbs Snow 30lbs Snow

Standard Wind Rated 90 mph, higher wind loads available.

Post Choice

Standard 3" Square Aluminum Post Standard Post with 2x6" Wood Look Side Plates

Aluminum Fluted Round Column (6", 8" or 10") Aluminum Fluted Square Column (6", 8" or 10")

Aluminum Smooth Square Column (6", 8" or 10") Fiberglass Round Column (6", 8", 10", or 12")
Any Color Available, Must Be Painted In Field