



AMERICANA

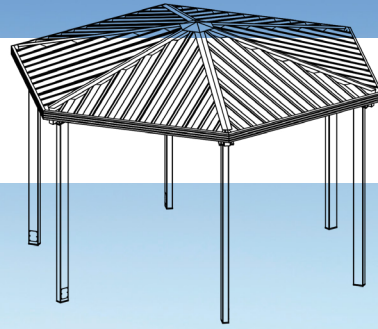
OUTDOORS

Elements for Life *Outside*®



www.AMERICANA.com

Gazebo Shelters





Apache Series

The Apache is Americana's most popular gazebo style shelter, due to the large range of size, style, and color options available. Featuring a six sided design, supported by six posts as standard, with a single post option available.

Sizes: 16-44' Diameter.

Roof Pitch: Standard 3/12.

Optional Roof Pitch: 4/12 - 8/12.

Structure: Hexagonal design, pre-fabricated, powder coated Steel frame.

Frame: Tubular Steel.

Standard Roof System:

24" Aluminum "W" Panel with Extruded Aluminum Gutters.

Optional Roof System:

36" Galvalume "R" panel with Aluminum Edge Trim, or Optional Gutter.

18" Galvalume Standing Seam Panel with Extruded Aluminum Gutters, or Edge Trim with T&G Wood.

8" Aluminum Roll Formed Flat Panel with Extruded Aluminum Gutters.

Tongue & Groove Wood with Shingles.

Add-On Accessories: Cupola, Double Tier Roof, Steel Railing, Benches.





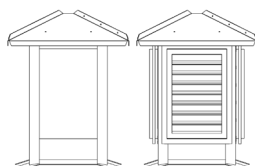


Cupola, Clerestory, & Gable Options

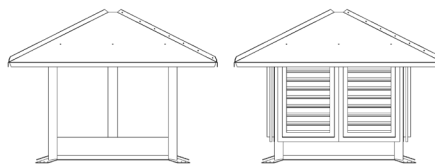
Our Cupolas, Clerestories, & Gables are designed to add natural light, ventilation, and a touch of elegance to your shelter. The Cupolas come standard with an Open design, or an optional Louvered panel. We also offer a fully customizable, laser cut panel option for the Cupolas, Clerestories, & Gables. Which is ideal for displaying logos, affiliations, or project sponsors.

Cupola Options

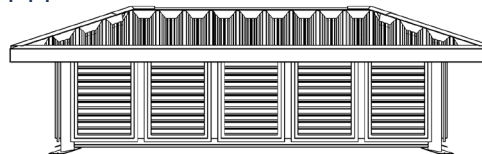
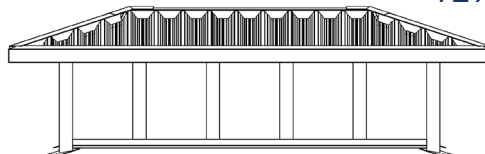
24 x 24"



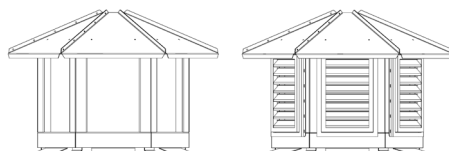
48 x 48"



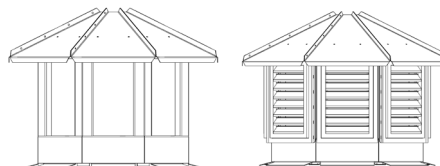
72 x 144"



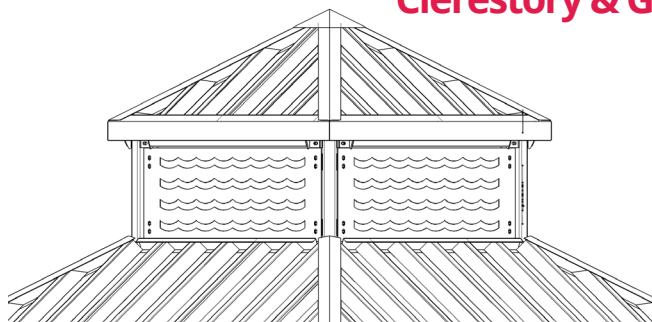
Hexagon (6 Sided) Cupola



Octagon (8 Sided) Cupola



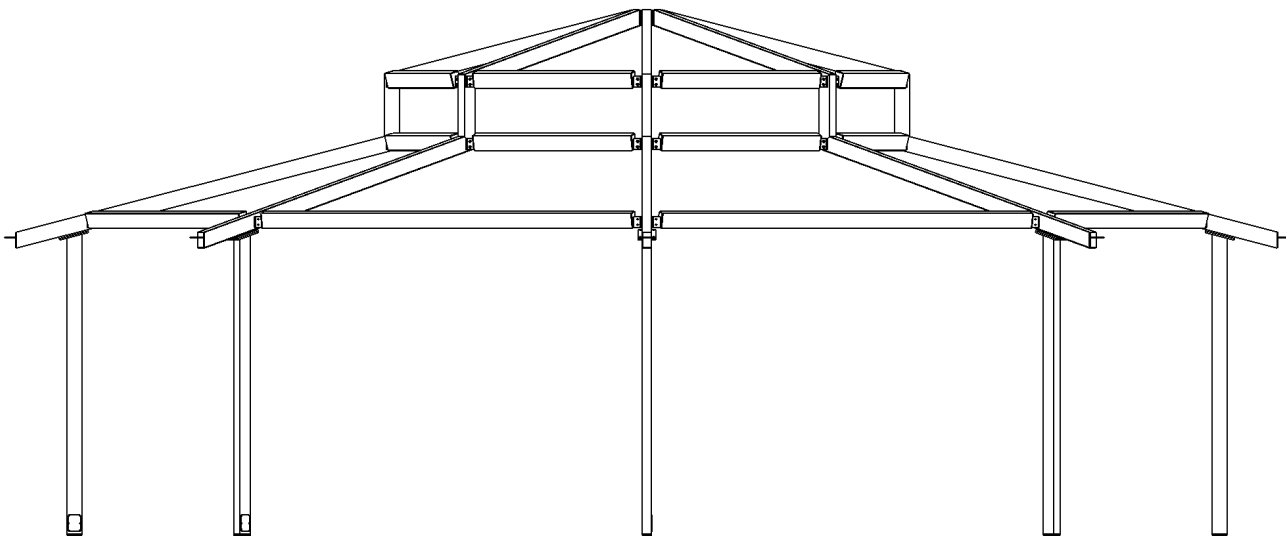
Clerestory & Gable Examples



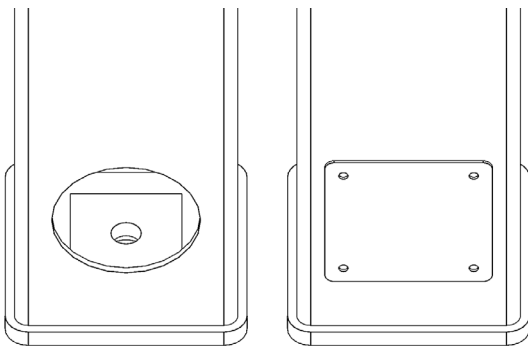


Frame & Post Style

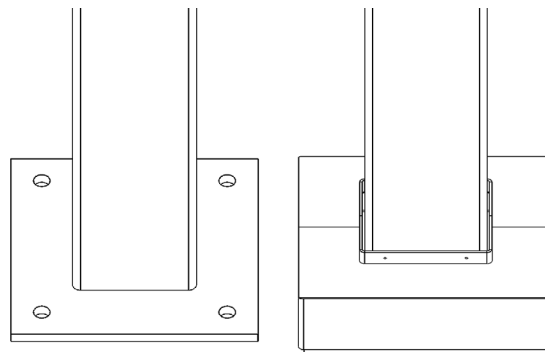
Americana Shelters feature American-made steel tubular frames, pre-drilled for easy bolt-together assembly, and detailed instructions that reduce installation costs. Fasteners are zinc-plated, galvanized, or stainless steel to prevent rust and stains.



Standard Post Base Plate Connections



Internal Anchor Bolt with Cover Plate



External Anchor Bolts with Optional Cover



Roof Panel Colors & Options

We take great pride in producing a majority of our roof panel options in-house, which gives us complete control over the quality and production schedule. By doing so, we are able to provide our customers with top-notch products while also passing on cost savings

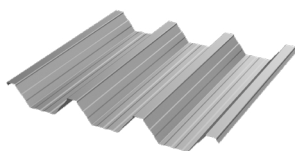
24" Aluminum Structural "W" Panel

Features:

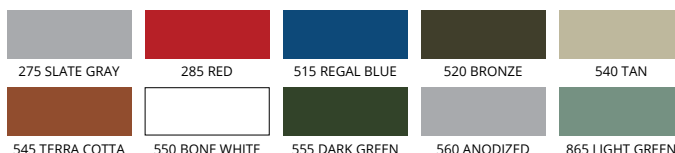
Structural roof panel designed to limit the amount rafters & purlins per structure.

Best overall value when comparing cost & strength.

Gutters are included for water erosion management.



Coverage Width - 24"
Minimum Slope - 1/2:12
Thickness - .038" & .024" (560 Anodized Only)
Finish - Stucco Embossed
Coatings - DuraCoat XT40 Ceranamel
Rib Spacing - 8" on center
Rib Height - 2-1/2"
Compatible with all model shelters except for Pergola



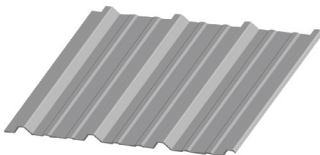
36" Galvalume® 26 Gauge "R" Panel

Features:

Flush fit for a cleaner, sleeker appearance.

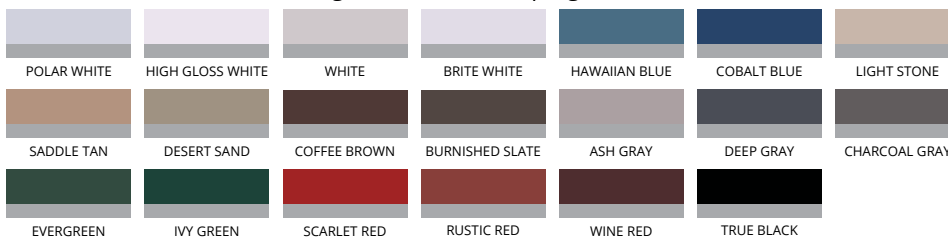
Designed to deter bird roosting.

Edge trim is included for a simple & flawless finish.

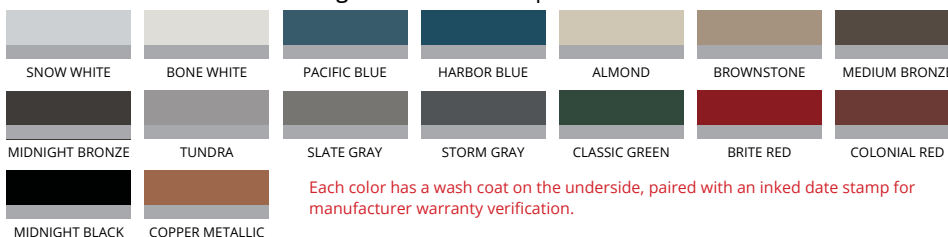


Coverage Width - 36"
Minimum Slope - 1/2:12
Gauge - 26
Finish - Smooth
Coatings - Silicized Polyester (Series 200) | Polyvinylidene Fluoride (Series 300)
Rib Spacing - 12" on center
Rib Height - 1-1/4"
Compatible with all model shelters except for Meramec, Colonial & Pergola

Signature 200 Series | High Gloss



Signature 300 Series | Low Gloss



Each color has a wash coat on the underside, paired with an inked date stamp for manufacturer warranty verification.



Roof Panel Colors & Options

We take great pride in producing a majority of our roof panel options in-house, which gives us complete control over the quality and production schedule. By doing so, we are able to provide our customers with top-notch products while also passing on cost savings

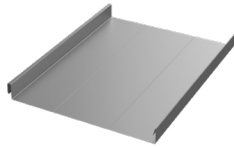
Features:

Flush fit for a cleaner, sleeker appearance.

— Designed to deter bird roosting.

— Gutters are included for water erosion management. Edge trim is standard with tongue and groove wood substructures applications.

18" Galvalume® 24 Gauge Standing Seam Panel



Coverage Width - 18"
Minimum Slope - 1/2:12
Gauge - 24
Finish - Smooth
Coatings - Siliconized Polyester
Rib Spacing - N/A
Rib Height - 1-3/4"

Compatible with all model shelters except for Meramec, Colonial, & Pergola



275 SLATE GRAY



515 REGAL BLUE



540 TAN



830 MATTE BLACK



860 COPPER PENNY



880 DARK BRONZE

Each color has a wash coat on the underside, paired with an inked date stamp for manufacturer warranty verification.

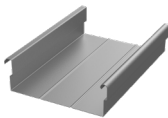
Features:

Flush fit for a cleaner, sleeker appearance.

— Designed to deter bird roosting.

— Gutters are included for water erosion management.

8" Aluminum Structural Flat Panel



Coverage Width - 8"
Minimum Slope - 1/2:12
Thickness - .024", .032", & .040"
Finish - Smooth Matte Finish
Coatings - DuraCoat XT40 Ceranamel
Rib Spacing - N/A
Rib Height - 2-5/8"

Compatible with all model shelters except for Meramec & Pergola



275 SLATE GRAY



510 BLACK



520 BRONZE

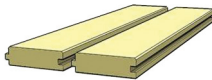


550 BONE WHITE



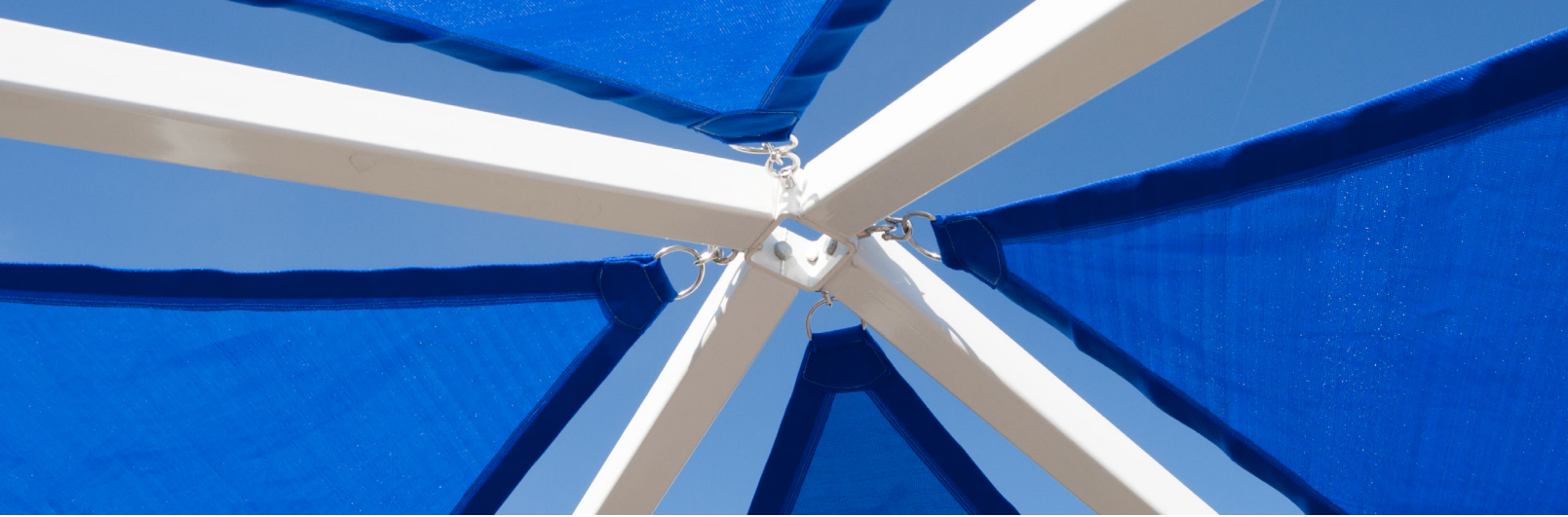
560 ANODIZED

Tongue and Groove Wood



- 1) Southern Yellow Pine
- 2) Western Cedar

Utilized as sub roofing for shelters using the 18" standing seam panels or shingles.



Frame & Fabric Color Options

Our Americana Industrial Coatings division enables us to powdercoat all of our products in-house, setting us apart from our competitors. This grants us complete authority over pricing, quality, and production times, allowing us to transfer these benefits to our customers.

Super Durable Frame Color Options

					
205 ORANGE RAL 2004	215 YELLOW	220 RAVEN (TEXTURED)	235 NAVY BLUE RAL 5003	240 ROYAL BLUE RAL 5005	242 SKY BLUE RAL 5015
					
245 CAST BRONZE RAL 8019	265 HUNTER GREEN RAL 6005	270 QUARTZ GRAY RAL 7039	275 SLATE GRAY	285 RED RAL 3001	290 SILVER
					
815 ASH GRAY	820 CHARCOAL GRAY	840 COLONIAL RED	865 LIGHT GREEN		

Super Durable & Anti Graffiti Frame Color Options

					
510 BLACK	515 REGAL BLUE	520 BRONZE	525 BROWN	530 CLAY	535 IVORY
					
540 TAN	545 TERRA COTTA	550 WHITE	555 DARK GREEN		



PO Box 1290, Salem IL 62881
1-800-851-0865, Fax: 1-618-548-2890
Sales@Americana.com
www.Americana.com

