



# AMERICANA

## OUTDOORS

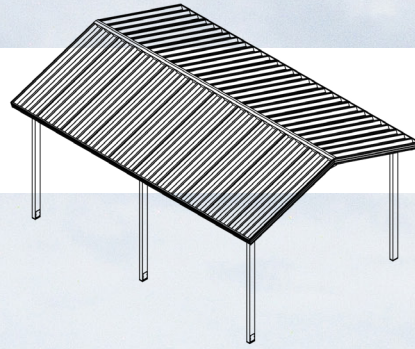
Elements for Life *Outside*®



W W W . A M E R I C A N A . c o m



# Gable Roof Shelters







## Illini Series

Gable roof shelters rank among the top choices for various applications, including city and community parks, educational institutions, rest stops, as well as residential and commercial endeavors. With sizes spanning from a modest 6' x 12' to a generous 50' x 84', these shelters offer versatile dimensions to suit your needs.

**Sizes:** Ranging from 6-60' wide and 12-84' long.

**Roof Pitch:** Standard 4/12.

**Optional Roof Pitch:** 1/12 - 12/12.

**Structure:** Four sided pre-fabricated, powder coated steel frame.

**Frame:** Tubular Steel.

**Standard Roof System:**

24" Aluminum "W" Panel with Extruded Aluminum Gutters.

**Optional Roof System:**

36" Galvalume "R" panel with Aluminum Edge Trim, or Optional Gutter.

18" Galvalume Standing Seam Panel with Extruded Aluminum Gutters, or Edge Trim with T&G Wood.

8" Aluminum Roll Formed Flat Panel with Extruded Aluminum Gutters.

Tongue & Groove Wood with Shingles.

**Add-On Accessories:** Steel railing.







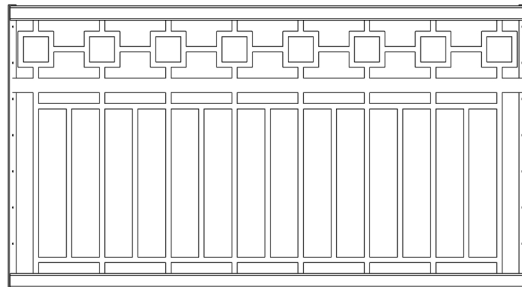
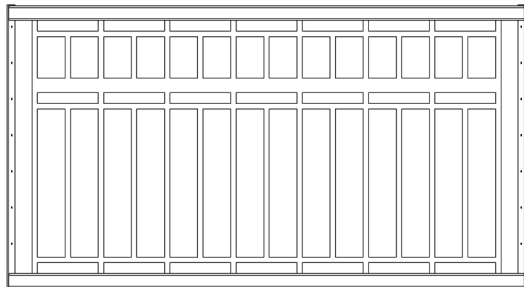
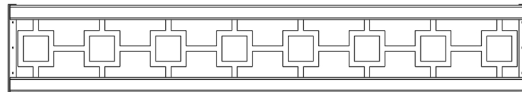
## Railing Options

Railings are a great way to add a unique touch to your structure and can be incorporated into most designs. There are several standard designs available, inspired by common architectural styles, and customized designs are available to suit your project's needs. Top Railings are 12" tall, Bottom Railings are 42" tall, made from 3/16" thick steel.

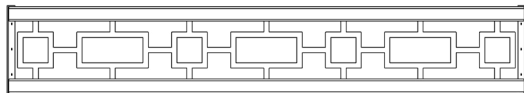
Line



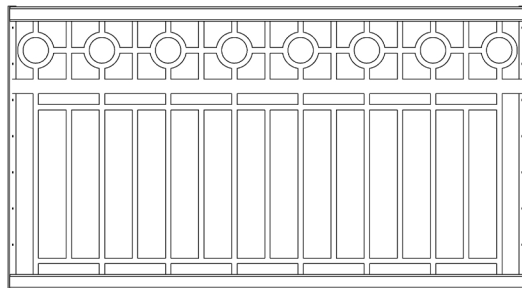
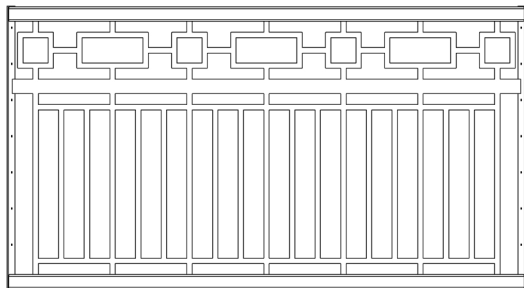
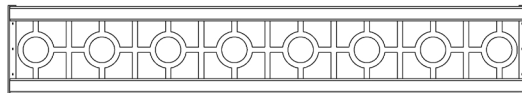
Square



Rectangle



Circle

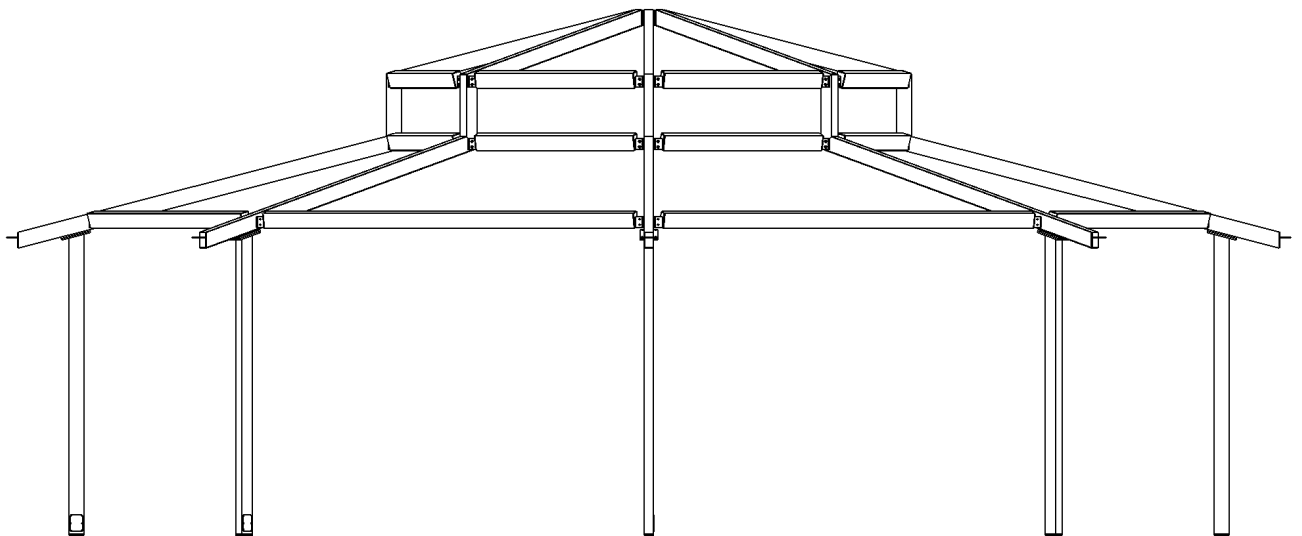




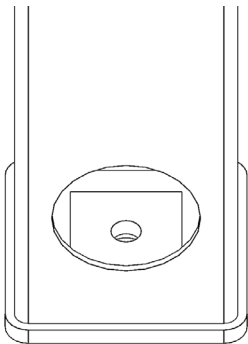


## Frame & Post Style

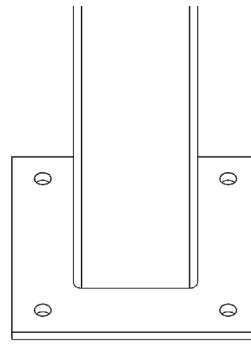
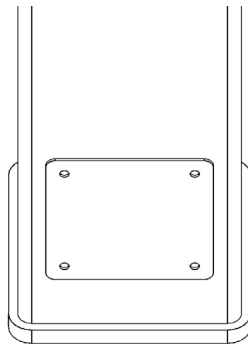
Americana Shelters feature American-made steel tubular frames, pre-drilled for easy bolt-together assembly, and detailed instructions that reduce installation costs. Fasteners are zinc-plated, galvanized, or stainless steel to prevent rust and stains.



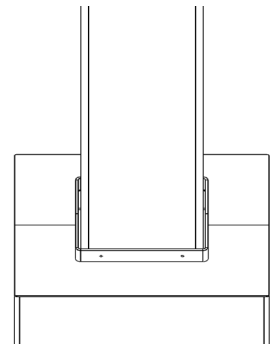
## Standard Post Base Plate Connections



Internal Anchor Bolt with Cover Plate



External Anchor Bolts with Optional Cover







## Roof Panel Colors & Options

We take great pride in producing a majority of our roof panel options in-house, which gives us complete control over the quality and production schedule. By doing so, we are able to provide our customers with top-notch products while also passing on cost savings

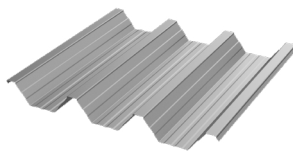
### Features:

Structural roof panel designed to limit the amount rafters & purlins per structure.

Best overall value when comparing cost & strength.

Gutters are included for water erosion management.

### 24" Aluminum Structural "W" Panel



Coverage Width - 24"  
Minimum Slope - 1/2:12  
Thickness - .038" & .024" (560 Anodized Only)  
Finish - Stucco Embossed  
Coatings - DuraCoat XT40 Ceranamel  
Rib Spacing - 8" on center  
Rib Height - 2-1/2"

Compatible with all model shelters except for Pergola



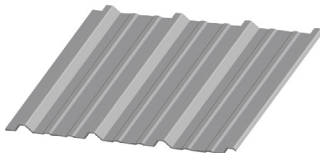
### Features:

Flush fit for a cleaner, sleeker appearance.

Designed to deter bird roosting.

Edge trim is included for a simple & flawless finish.

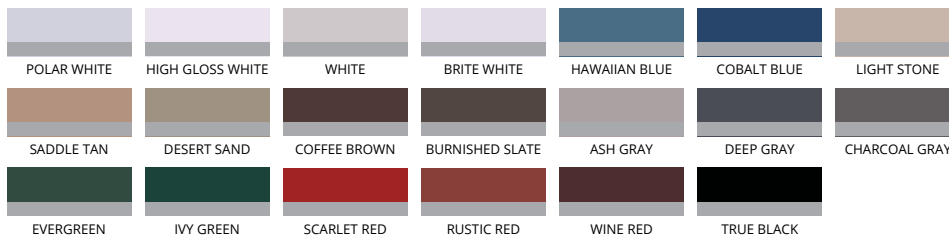
### 36" Galvalume® 26 Gauge "R" Panel



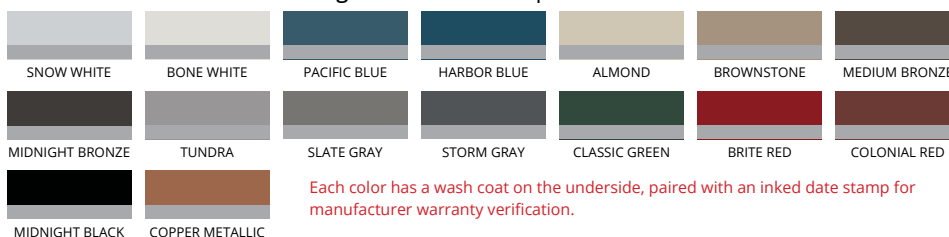
Coverage Width - 36"  
Minimum Slope - 1/2:12  
Gauge - 26  
Finish - Smooth  
Coatings - Silicized Polyester (Series 200) | Polyvinylidene Fluoride (Series 300)  
Rib Spacing - 12" on center  
Rib Height - 1-1/4"

Compatible with all model shelters except for Meramec, Colonial & Pergola

#### Signature 200 Series | High Gloss



#### Signature 300 Series | Low Gloss



Each color has a wash coat on the underside, paired with an inked date stamp for manufacturer warranty verification.





## Roof Panel Colors & Options

We take great pride in producing a majority of our roof panel options in-house, which gives us complete control over the quality and production schedule. By doing so, we are able to provide our customers with top-notch products while also passing on cost savings

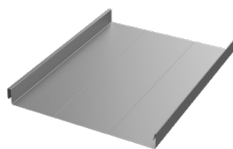
### Features:

Flush fit for a cleaner, sleeker appearance.

— Designed to deter bird roosting.

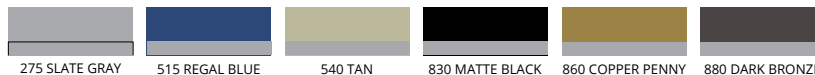
— Gutters are included for water erosion management. Edge trim is standard with tongue and groove wood substructures applications.

### 18" Galvalume® 24 Gauge Standing Seam Panel



Coverage Width - 18"  
Minimum Slope - 1/2:12  
Gauge - 24  
Finish - Smooth  
Coatings - Siliconized Polyester  
Rib Spacing - N/A  
Rib Height - 1-3/4"

Compatible with all model shelters except for Meramec, Colonial, & Pergola



Each color has a wash coat on the underside, paired with an inked date stamp for manufacturer warranty verification.

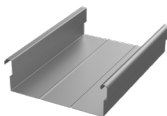
### Features:

Flush fit for a cleaner, sleeker appearance.

— Designed to deter bird roosting.

— Gutters are included for water erosion management.

### 8" Aluminum Structural Flat Panel

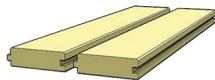


Coverage Width - 8"  
Minimum Slope - 1/2:12  
Thickness - .024", .032", & .040"  
Finish - Smooth Matte Finish  
Coatings - DuraCoat XT40 Ceranamel  
Rib Spacing - N/A  
Rib Height - 2-5/8"

Compatible with all model shelters except for Meramec & Pergola



### Tongue and Groove Wood



- 1) Southern Yellow Pine
- 2) Western Cedar

Utilized as sub roofing for shelters using the 18" standing seam panels or shingles.





# Frame & Fabric Color Options

Our Americana Industrial Coatings division enables us to powdercoat all of our products in-house, setting us apart from our competitors. This grants us complete authority over pricing, quality, and production times, allowing us to transfer these benefits to our customers.

## Super Durable Frame Color Options

|   |   |   |   |  |   |
|---|---|---|---|--|---|
|    |    |    |    |    |    |
| 205 ORANGE<br>RAL 2004  | 215 YELLOW  | 220 RAVEN (TEXTURED)  | 235 NAVY BLUE<br>RAL 5003   | 240 ROYAL BLUE<br>RAL 5005   | 242 SKY BLUE<br>RAL 5015  |
|  |  |  |  |  |  |
| 245 CAST BRONZE<br>RAL 8019   | 265 HUNTER GREEN<br>RAL 6005  | 270 QUARTZ GRAY<br>RAL 7039   | 275 SLATE GRAY  | 285 RED<br>RAL 3001  | 290 SILVER  |
|  |  |  |  |  |   |
| 815 ASH GRAY  | 820 CHARCOAL GRAY   | 840 COLONIAL RED  | 865 LIGHT GREEN   |  |   |

## Super Durable & Anti Graffiti Frame Color Options

|   |   |   |   |  |   |
|---|---|---|---|--|---|
|  |  |  |  |  |  |
| 510 BLACK   | 515 REGAL BLUE  | 520 BRONZE  | 525 BROWN   | 530 CLAY   | 535 IVORY   |
|  |  |  |  |  |   |
| 540 TAN   | 545 TERRA COTTA   | 550 WHITE   | 555 DARK GREEN  |  |   |





PO Box 1290, Salem IL 62881  
1-800-851-0865, Fax: 1-618-548-2890  
Sales@Americana.com  
www.Americana.com

