



Adding a porch or patio cover? Points to consider:

1. Roof panel choices

Americana offers several roof panels for our covers. Each model lists style included.

- V shaped panels are the most economical with a corrugated ceiling.
- Flat shape panel for a smooth under ceiling
- Insulated panel has a polystyrene core and stucco embossed aluminum skin.

2. Post placement.

- Sierra model:

4 in. tall beam mounts to pre-punched roof panels, creating a 6 in. overhang.

- All other models:

Posts mount under beam. Place beam 6 in. to 24 in. from front upon installation.

3. Wall mounting area

Unit must slope down from the attached wall.

If using 8' tall post on a 10' projection cover: Mount unit at 101 inches.

$96 \text{ in. (8')} + 5 \text{ in. (1/2 in. per foot of projection)} = 101 \text{ in. mounting height}$

Make sure wall is free of obstructions at this dimension.

Post may be shortened on job site, changing mounting height if needed.

4. Posts can be surface mounted or bury 2' in concrete. Order longer post if placing in concrete.

5. Post type will be indicated in the kit information with options listed.

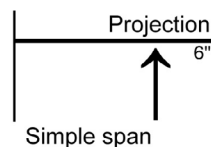
6. When choosing model keep weather and environmental conditions in mind for your area.

Reference each model for wind speed and live snow load capabilities.

Engineering Data on Simple Span

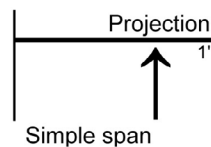
Attached Units = Distance from wall mount to beam/post location

Freestand Units = Distance between beams/posts

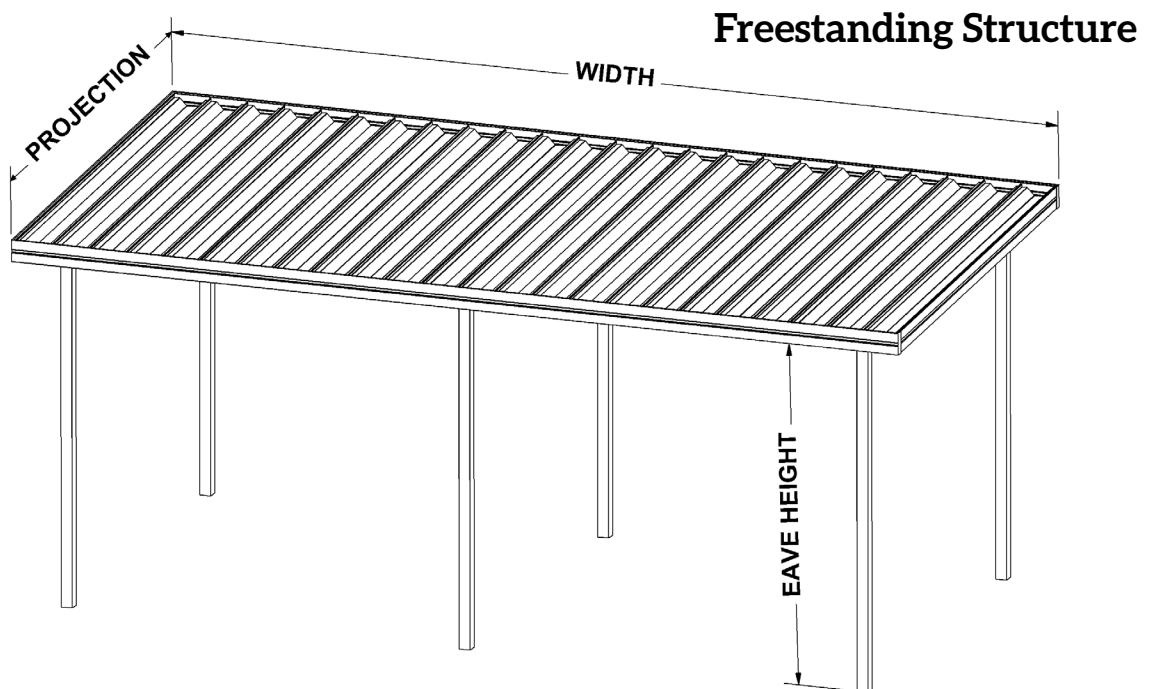
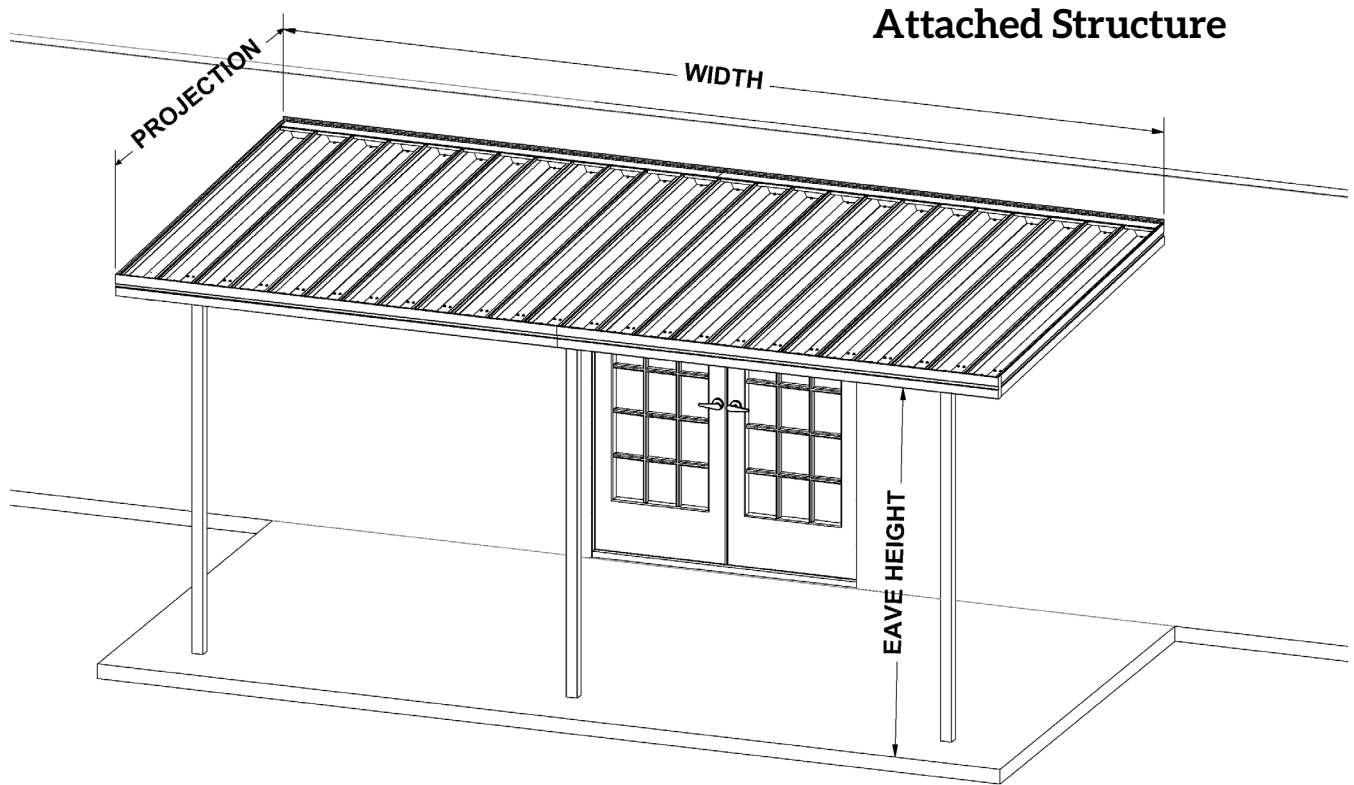


Examples

Sierra style has a standard 6" set back of beam.
 $8' 6'' \text{ projection} = 8' \text{ beam location} = 8' \text{ simple span}$
 Light & Moderate Load
 54# per sq foot & 110 mph winds



Teton style has adjustable beam placement
 $11' \text{ projection with } 1' \text{ beam setback} = 10' \text{ simple span}$
 Light & Moderate Load
 24# per sq foot & 90 mph winds




Features:

- Designed for dent resistance and durability, the perfect cover for areas with a lot of hail
- 10 in. wide roof panel of Galvalume® steel combines barrier protection of aluminum and zinc against cuts and scratches. Guaranteed against rusting for 20.5 years, far longer than galvanized or painted steel
- Extruded aluminum gutter and side trim
- Adjustable post placement with 3 in. square beam, set back 6 - 24 in. from front, max 12' from house
- Extruded 3" square aluminum posts with brackets
- Two piece wall channel to adjust roof slope

Engineering Data for Open Structures

24 gauge Galvalume Steel

10" Structural "V" Roof Panel							
# PER SQ FT							
Simple Span (ft)							
	4'	6'	7'	8'	9'	10'	
Live Load	110	75	60	45	35	25	

We can engineer what you need. Call us with your code requirements. Loads can be increased by moving beam placement or adding additional beams.


Features:

- Extruded aluminum gutter and side trim
- Roll-formed aluminum panels 10 in. wide
- Extruded aluminum posts with mounting bracket:
3 inch square in 8' or 10' lengths
- 3 inch square support beam
- Two piece wall channel to adjust roof slope
- Scupper sent to drain water from gutter

Engineering Data for Open Structures

Ozark Patio Cover				
	6'	8'	10'	12'
Beam Set Backs	6"	12"	12"	12"
Roof Panel Thickness	.025	.025	.025	.025
Live Snow Load	90 lbs	65 lbs	45 lbs	30 lbs
Wind Speed	120 mph	120 mph	110 mph	85 mph

We can engineer what you need. Call us with your code requirements. Loads can be increased by moving beam placement or adding additional beams.

Components

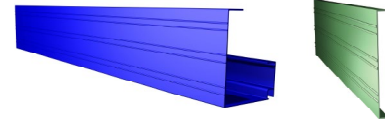
Extruded front gutter and side trim, aluminum

Alpine Color Choices

WHITE	BRONZE
IVORY	CLAY

Ozark Color Choices

WHITE	DARK GREEN	
IVORY	TAN	BRONZE



Alpine Roof Panels

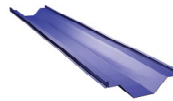
10" V Panel
Galvalume Steel, roll formed
Slide or snap together
Pre-punched for installation

WHITE

Ozark Roof Panels

10" V Panel - .025 gauge
Aluminum, roll formed
Slide or snap together
Pre-punched for installation

WHITE



Alpine Color Choices

WHITE
IVORY
BRONZE
CLAY

3" Square Post with Brackets

Aluminium Post in 8' or 10' length



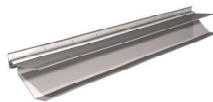
Ozark Color Choices

WHITE
IVORY
BRONZE
TAN

Wall Hanger

Extruded aluminum 2 piece system allows virtually any roof pitch and protects against damage from ground heaving.

Pre-punched for ease of installation

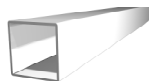


WHITE	IVORY*	<small>*Only Available on Ozark Model</small>
-------	--------	---

Support Beam

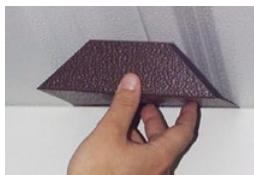
Extruded, 3" square Aluminum

WHITE

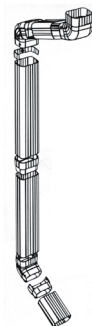


Optional Components

Bird Plugs: use between beam and roof panel
Choice of : Aluminum or Styrofoam



Downspout Kit
2x3" tube, all elbows, fittings, straps



___ Projection from wall to front of cover in 1" increments.

___ Width along wall in 10" increments

Wall Mounting: Check wall for obstructions

Posts will mount to:

___ Concrete slab ___ Wood Deck

___ Buried in ground...use 10' post/column

Warranty

What the Warranty Covers:

Americana Outdoors Inc warrants its products that have been installed in accordance with the installation guidelines, under normal usage conditions, and with proper maintenance as follows: Ten (10) year warranty against peeling, cracking, blistering, or crazing of the surface finish of aluminum components. One (1) year warranty against defects in materials and workmanship. Sunbrella® tight weave fabric, & Sheerweave fabric - 10 year limited warranty. Textilene® open weave fabric, & Soltis 86 - 5 year limited warranty.

Period of Coverage:

The warranty period begins on the date of original shipment.

What Americana Will Do To Correct Problems:

If defects or damage of the kind mentioned above should occur within the warranty period, Americana will replace the defective parts only; FOB its plant at Salem, Illinois, upon receiving the written and documented claim of purchaser.

What the Warranty Excludes:

Because of normal aging and weathering of materials, it may not be possible to perfectly match the colors of original parts and replacement parts. Americana will not provide or pay for the installation of such replacement parts. Americana shall not be responsible for weather related failures, damages due to faulty installation, misuse or abuse of the product, or for consequential damages, including personal injuries or property damages. There are no warranties, express or implied, which extend beyond the description on the face hereof.

How Do You Get Service:

If you believe that you have a claim under this warranty, submit a copy of your original receipt or other reasonable evidence of the date of purchase, the identity of the product, and photos and a description of the allegedly defective product to the address below. Please also include your name, address, and phone number so that a customer service representative can respond to your submission. Ultimate determination of the existence and extent of any claimed defect under this warranty shall be made by Americana in its sole discretion.

Submit Claims To:

Americana Outdoors, Inc Warranty Claim, P.O. Box 1290, Salem, IL, 62881



PO Box 1290,
2 Industrial Drive, Salem IL 62881
1-800-851-0865
Sales@Americana.com



2021 ALPINE & OZARK PATIO
COVER & CARPORT BROCHURE