



Imperial Marquee with 6" Fascia and 8" Flat panels



Imperial Marquee with 6" Fascia and 8" Flat panels



Imperial Marquee with 6" Fascia and 8" flat panels



Imperial Marquee with 6" Fascia and 8" flat panels



Imperial Marquees with 6" Fascia and 8" flat panels



Imperial Marquee with 6" Fascia and 8" flat panels



Imperial Marquee with Crown Molding, 12" Fascia, and 8" flat panels



Imperial Marquee with 12" Fascia and 8" flat panels



Imperial Walkway Cover



Imperial Walkway Cover

Super Durable Frame Color Options



Super Durable & Anti Graffiti Frame Color Options



Frame Finish

Standard: Super durable frame finishes:

The anti-graffiti, super durable polyester TGIC finish, is a powder that is applied 6-9 mils thick then cured at 400 degrees until fused into a smooth glossy permeate coating. This coating meets AAMA 2604-2 specifications and has a much longer life expectancy than the industries standard TGIC. This anti-graffiti coating provides an outstanding finish.

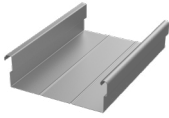
The smooth glossy surface can withstand numerous cleanups with the use of our proprietary chemical cleaner without altering the finish. Paint and marker can be removed completely with only a slight reduction in gloss.

The architectural matte, super durable polyester TGIC finish, is a powder that is applied 6-9 mils thick then cured at 400 degrees into a smooth matte permeate coating. This coating meets AAMA 2604-2 specifications and has a much longer life expectancy than the industries standard TGIC.



Roof Panel & Color Options

8" Aluminum Structural Flat Panel Smooth Finish



Coverage Width - 8"
 Minimum Slope - 1/2:12
 Finish - Smooth Matte Finish
 Coatings - DuraCoat XT40 Ceranamel
 Rib Spacing - N/A
 Rib Height - 2-5/8"



275 SLATE GRAY



510 BLACK



520 BRONZE



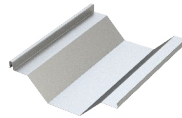
540 TAN



550 BONE WHITE


 560 ANODIZED
 UP CHARGE

10" Aluminum "V" Panel Stucco Embossed



Coverage Width - 10"
 Minimum Slope - 1/2:12
 Finish - Stucco Embossed
 Coatings - Super Durable Polyester
 Rib Spacing - N/A
 Rib Height - 2-3/4"

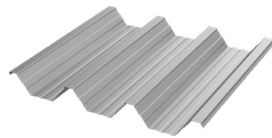


WHITE



IVORY

24" Aluminum Structural "W" Panel

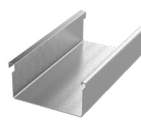


Coverage Width - 24"
 Minimum Slope - 1/2:12
 Thickness - .038"
 Finish - Stucco Embossed
 Coatings - DuraCoat XT40 Ceranamel
 Rib Spacing - 8" on center
 Rib Height - 2-1/2"



550 BONE WHITE

6" Aluminum Extruded Flat Panel



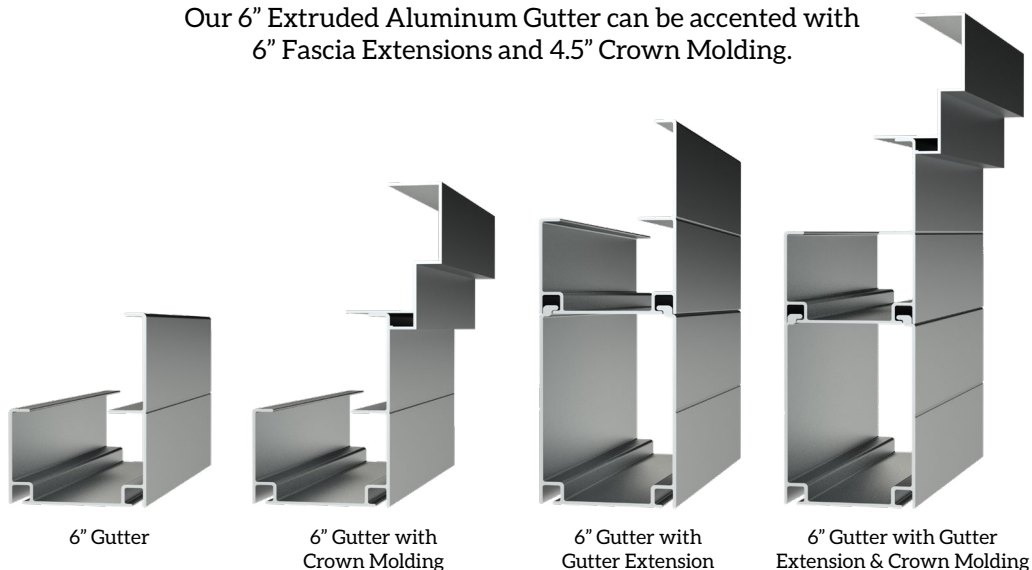
Coverage Width - 6"
 Minimum Slope - 1/2:12
 Finish - Smooth Gloss Finish
 Coatings - Super Durable Polyester
 Rib Spacing - N/A
 Rib Height - 2-7/8"



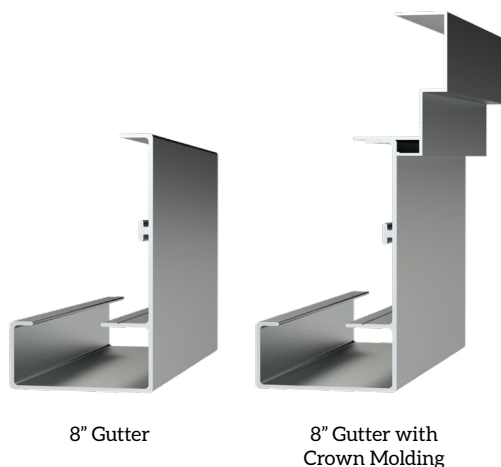
Powder coat finish available in all frame colors.
 Full RAL color palette available at additional cost.

Fascia & Gutter Options

Our 6" Extruded Aluminum Gutter can be accented with 6" Fascia Extensions and 4.5" Crown Molding.

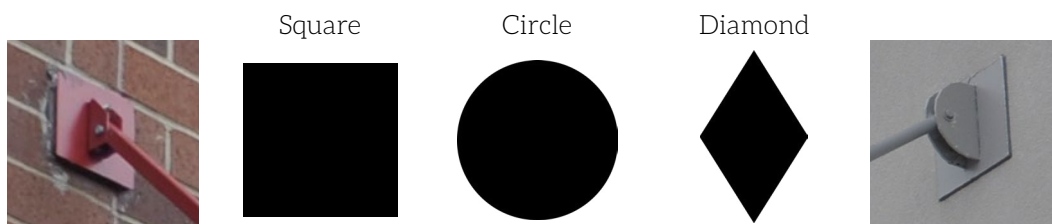


Our 8" Extruded Aluminum Gutter can be accented with 4.5" Crown Molding.

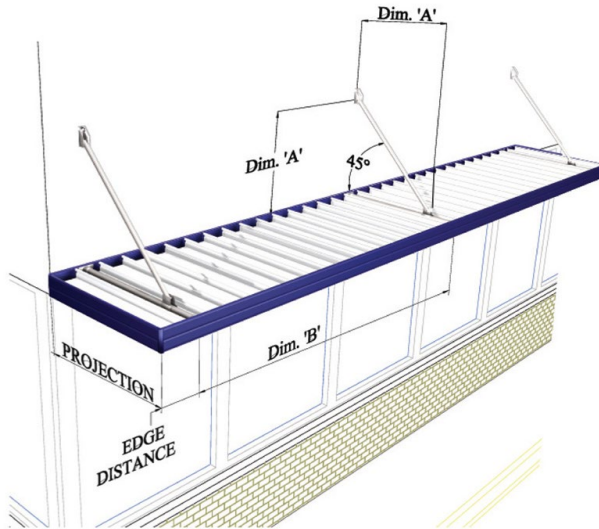


Decorative Brace Wall Plates

Custom designs are available, call us for more information!



Engineering & Installation



Designed & Engineered using precut mechanically fastened components for quick & easy installation with minimal in-field preparations.

Zinc plated, galvanized or stainless steel fasteners eliminate rust and stains.



B = Distance between supports at load in lbs per sq ft

A	Projection	B @ 22.6#	B @ 32.6#	B @ 42.5#
3'	4'	10' 0"	9' 2"	7' 0"
4'	5'	10' 0"	7' 10"	6' 0"
5'	6'	9' 10"	6' 10"	5' 2"
6'	7'	8' 8"	6' 0"	4' 7"
7'	8'	7' 9"	5' 4"	4' 1"
8'	9'	7' 0"	4' 10"	3' 8"
9'	10'	5' 8"	4' 6"	3' 4"

Engineering Requirements

NEED TO MEET SITE SPECIFIC LOAD REQUIREMENTS? CALL FOR CUSTOM QUOTES

Warranty Terms

Lifetime Limited Warranty

Lifetime Limited Warranty on aluminum against material failure and corrosion.

25 Year Limited Warranty

25 Year Limited Warranty on steel against material failure and defects.

10 Year Limited Warranty

10 Year Limited Warranty on all powder coat finishes (200 and 500 series).

With the use of Americana's 500 Series Anti-graffiti powder coat finish is guaranteed to allow removal of graffiti with virtually no change to the finish.

Americana will not be responsible for damages caused by others, building settlement, corrosion by moisture, chemical and pollution, or acts of God. Damage caused by vandalism, abnormal use, lack of maintenance, or incorrect installation will not be covered.



PO Box 1290, Salem IL 62881
1-800-851-0865, Fax: 1-618-548-2890
Sales@Americana.com
www.Americana.com



Version	Revision Date
1.4	04/13/20

2020 IMPERIAL CATALOG